

2013-2014 Student Performance Results

South Orange & Maplewood School
District

Objectives

- Historical changes to the State Exams
- Elementary School NJASK Results
- Middle School NJASK Results
- Overview of all tested grades 3-8 & 11

*The NJDOE did not release the School Accountability Reports. We will cover individual School results later in the year when this information is made available.

Changes to state assessments

- State changes in assessments
 - Grades 5-8 were changed in 2007/2008
 - Grades 3-4 were changed in 2008/2009
- Due to changes in the assessments we can not compare current standardized test results with standardized test results prior to 2007-2008 for grades 5-8 and prior to 2008-2009 for grades 3-4.
- 2012-2013 common core questions were introduced into the NJASK exams.

ELEMENTARY SCHOOL RESULTS

Elementary School Student Performance

Language Arts

- The percentage of students in grades 3-5 scoring proficient or higher on the Language Arts standardized exams increased from 74% in 2008-2009 to 82% in 2013-2014.
- 82% percent of students in grades 3-5 scored proficient or higher on the 2013-2014 Language Arts standardized exams as compared to 80% in the prior year.
- 60% of black students in grades 3-5 scored proficient or higher on the 2013-2014 Language Arts standardized exams as compared to 59% in the prior year. The achievement gap remained flat.
- 43% of special services students in grades 3-5 scored proficient or higher on the 2013-2014 Language Arts standardized exams as compared to 42% in the prior year. The gap increased by 1 percentage point.

Elementary School Student Performance

Math

- The percentage of students in grades 3-5 scoring proficient or higher on the Math standardized exams increased from 81% in 2008-2009 to 84% in 2013-2014.
- 84% percent of students in grades 3-5 scored proficient or higher on the 2013-2014 Math standardized exams as compared to 86% in the prior year.
- 65% of black students in grades 3-5 scored proficient or higher on the 2013-2014 Math standardized exams as compared to 69% in the prior year. The achievement gap increased by 1 percentage point.
- 56% of special services students in grades 3-5 scored proficient or higher on the 2013-2014 Math standardized exams as compared to 56% in the prior year. The gap decreased by 3 percentage points.

MIDDLE SCHOOL RESULTS

Middle School Student Performance

Language Arts

- The percentage of students in grades 6-8 scoring proficient or higher on the Language Arts standardized exams increased from 79% in 2008-2009 to 83% in 2013-2014.
- 83% percent of students in grades 6-8 scored proficient or higher on the 2013-2014 Language Arts standardized exam as compared to 83% in the prior year.
- 64% of black students in grades 6-8 scored proficient or higher on the 2013-2014 Language Arts standardized exams as compared to 67% in the prior year. The achievement gap increased by 3 percentage points.
- 41% of special services students in grades 6-8 scored proficient or higher on the 2013-2014 Language Arts standardized exams as compared to 42% in the prior year. The gap increased by 2 percentage points.

Middle School Student Performance

Math

- The percentage of students in grades 6-8 scoring proficient or higher on the Math standardized exams increased from 73% in 2008-2009 to 82% in 2013-2014.
- 82% percent of students in grades 6-8 scored proficient or higher on the 2013-2014 Math standardized exams as compared to 80% in the prior year.
- 66% of black students in grades 6-8 scored proficient or higher on the 2013-2014 Math standardized exams as compared to 63% in the prior year. The achievement gap decreased by 1 percentage point.
- 43% of special services students in grades 6-8 scored proficient or higher on the 2013-2014 Math standardized exams as compared to 39% in the prior year. The gap decreased by 2 percentage points.

OVERALL RESULTS

Overall Student Performance

- The percentage of students in grades 3-8 and 11 scoring proficient or higher on all standardized exams increased year over year from 67% in 2008-2009 to 76% in 2013-2014
- The percentage of students in grades 3-8 and 11 scoring advanced proficient on 1 or more standardized exam increased from 41% in 2008-2009 to 54% in 2013-2014.
- The percentage of students in grades 3-8 and 11 scoring proficient or higher in Language Arts was 84% in 2013-2014; a 1 percentage point gain over the prior year.
- The percentage of students in grades 3-8 and 11 scoring proficient or higher in Math was 82% in 2013-2014; a 1 percentage point loss over the prior year.

Overall Student Performance

Language Arts

- The percentage of students in grades 3-8 and 11 scoring proficient or higher on the Language Arts standardized exams increased from 78% in 2008-2009 to 84% in 2013-2014 and the DFG gap was reduced by 6 percentage points.
- The percentage of black students in grades 3-8 and 11 scoring proficient or higher on the Language Arts standardized exams increased from 63% in 2008-2009 to 68% in 2013-2014 and the achievement gap was reduced by 4 percentage points.
- The percentage of special services students in grades 3-8 and 11 scoring proficient or higher on the Language Arts standardized exams increased from 33% in 2008-2009 to 45% in 2013-2014 and the gap was reduced by 7 percentage points.

Overall Student Performance

Math

- The percentage of students in grades 3-8 and 11 scoring proficient or higher on the Math standardized exams increased from 77% in 2008-2009 to 82% in 2013-2014 and the DFG gap was reduced by 2 percentage points.
- The percentage of black students in grades 3-8 and 11 scoring proficient or higher on the Math standardized exams increased from 59% in 2008-2009 to 66% in 2013-2014 and the achievement gap was reduced by 6 percentage points.
- The percentage of special services students in grades 3-8 and 11 scoring proficient or higher on the Math standardized exams increased from 40% in 2008-2009 to 48% in 2013-2014 and the gap was reduced by 3 percentage points.

Overall Student Performance

Science

- The percentage of students in grades 4 and 8 scoring proficient or higher on the Science standardized exams increased from 90% in 2008-2009 to 94% in 2013-2014 and the DFG gap was reduced by 6 percentage points.
- The percentage of black students in grades 4 and 8 scoring proficient or higher on the Science standardized exams increased from 82% in 2008-2009 to 86% in 2013-2014 and the achievement gap was reduced by 4 percentage points.
- The percentage of special services students in grades 4 and 8 scoring proficient or higher on the Science standardized exams increased from 66% in 2008-2009 to 72% in 2013-2014 and the gap was reduced by 3 percentage points.

Summary

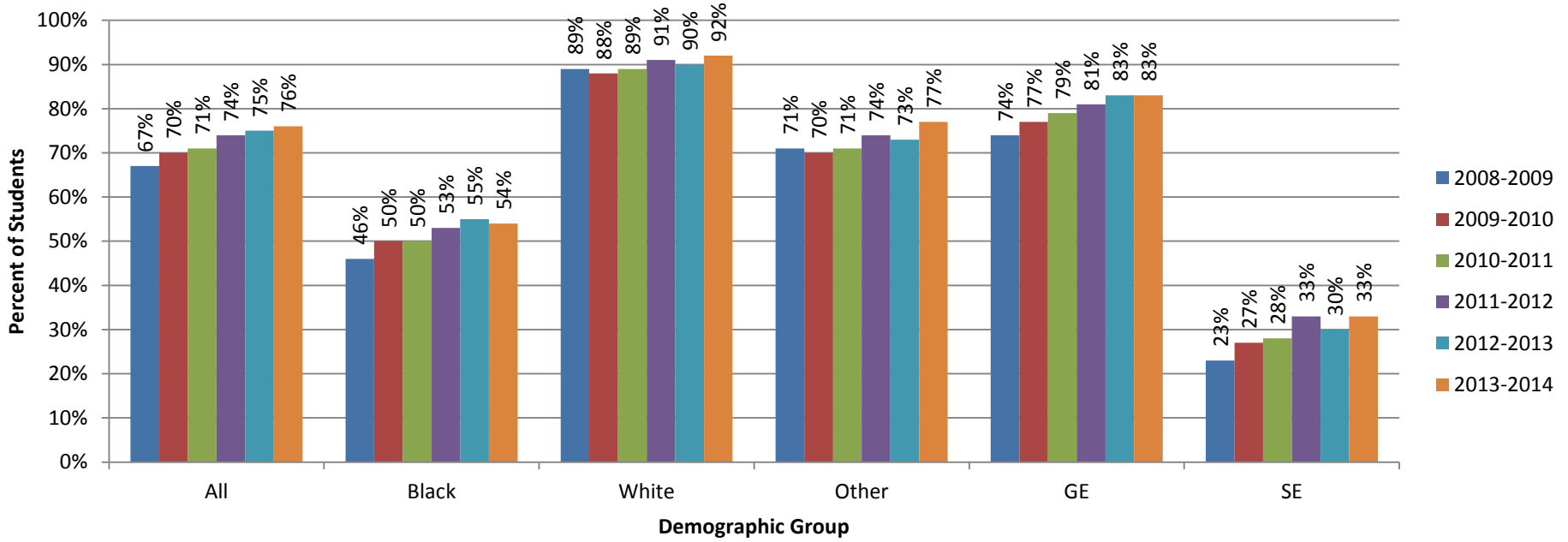
- Over the last 5 years standardized test results improved and gaps were reduced across the board.
- The data shows Math results in grade 3-5 declined over the last 2 years while Language Arts continued to improve.
- The data shows Language Arts results in grade 6-8 were flat while Math continued to improve.

Appendix

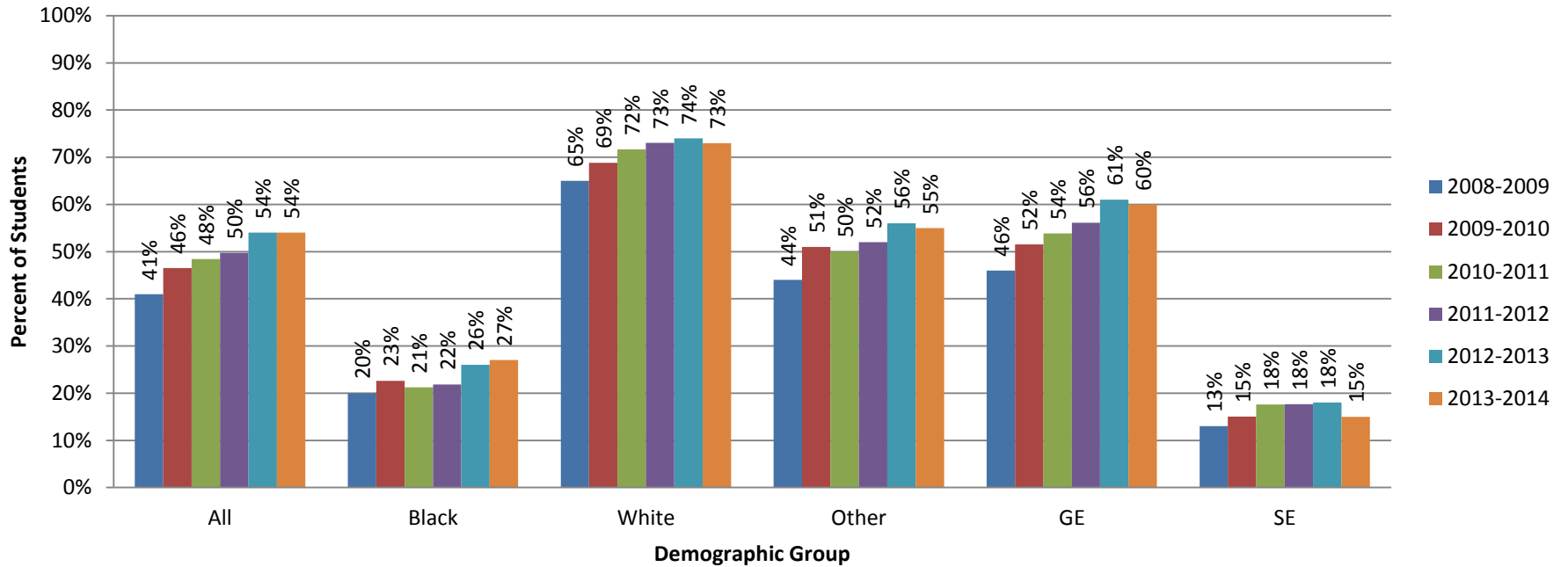
South Orange & Maplewood School District

OVERALL

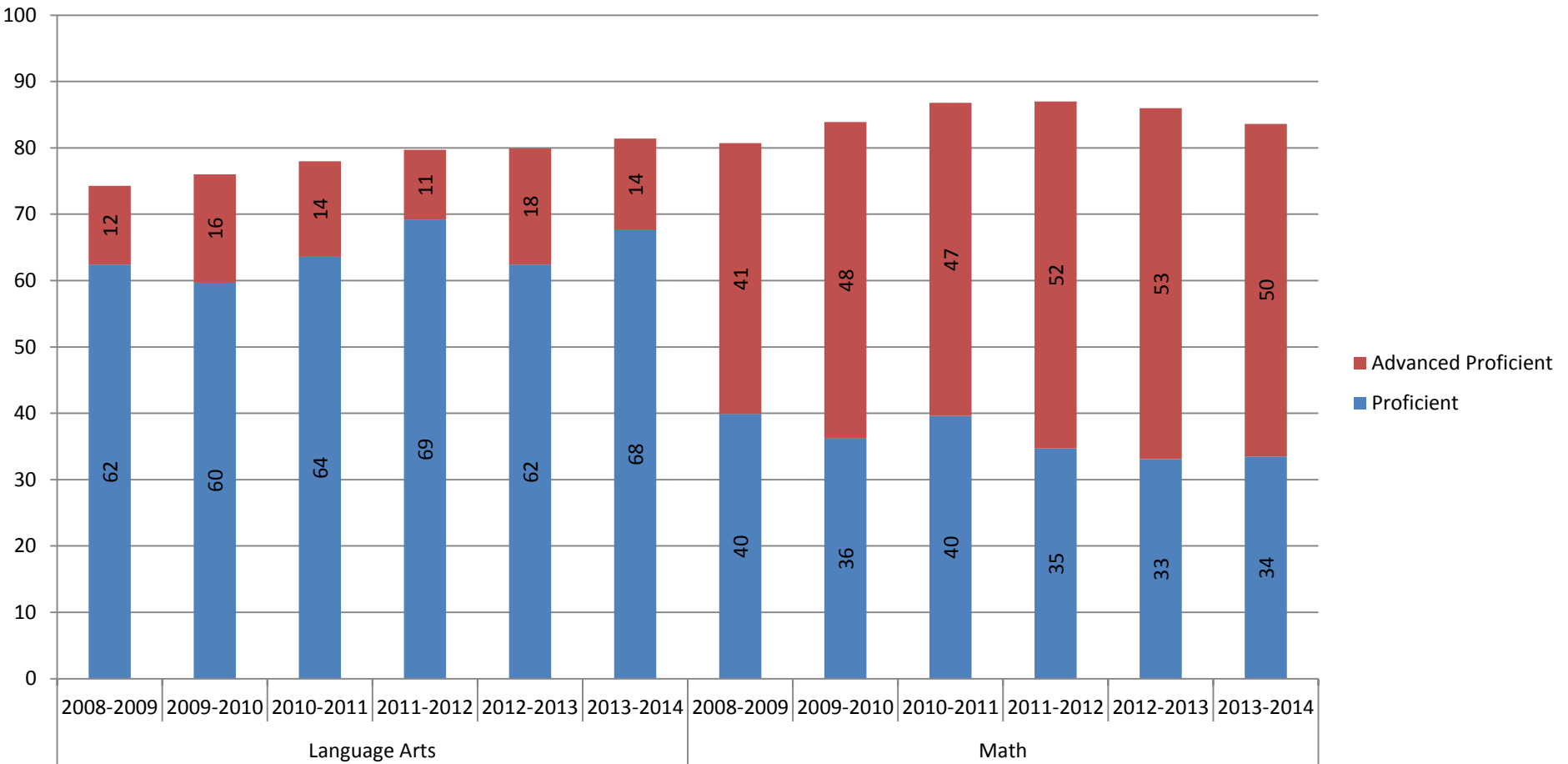
Students Proficient in Math, Language Arts and Science Grades 3-8 and 11



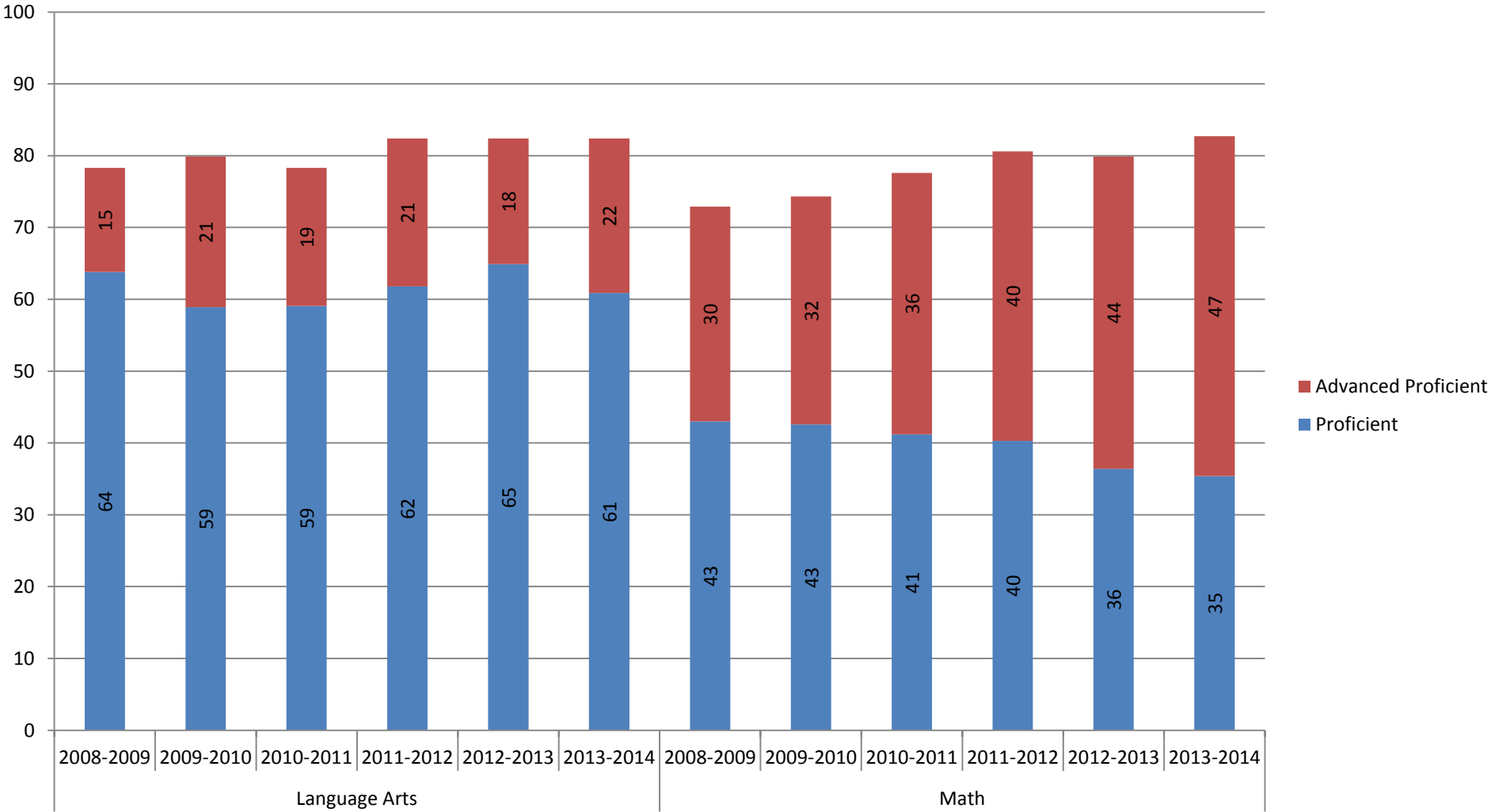
Students Advanced Proficient on 1 or More Standardized Exam (Language Arts, Math, Science) Grade 3-8 and 11



NJASK Results Grades 3-5



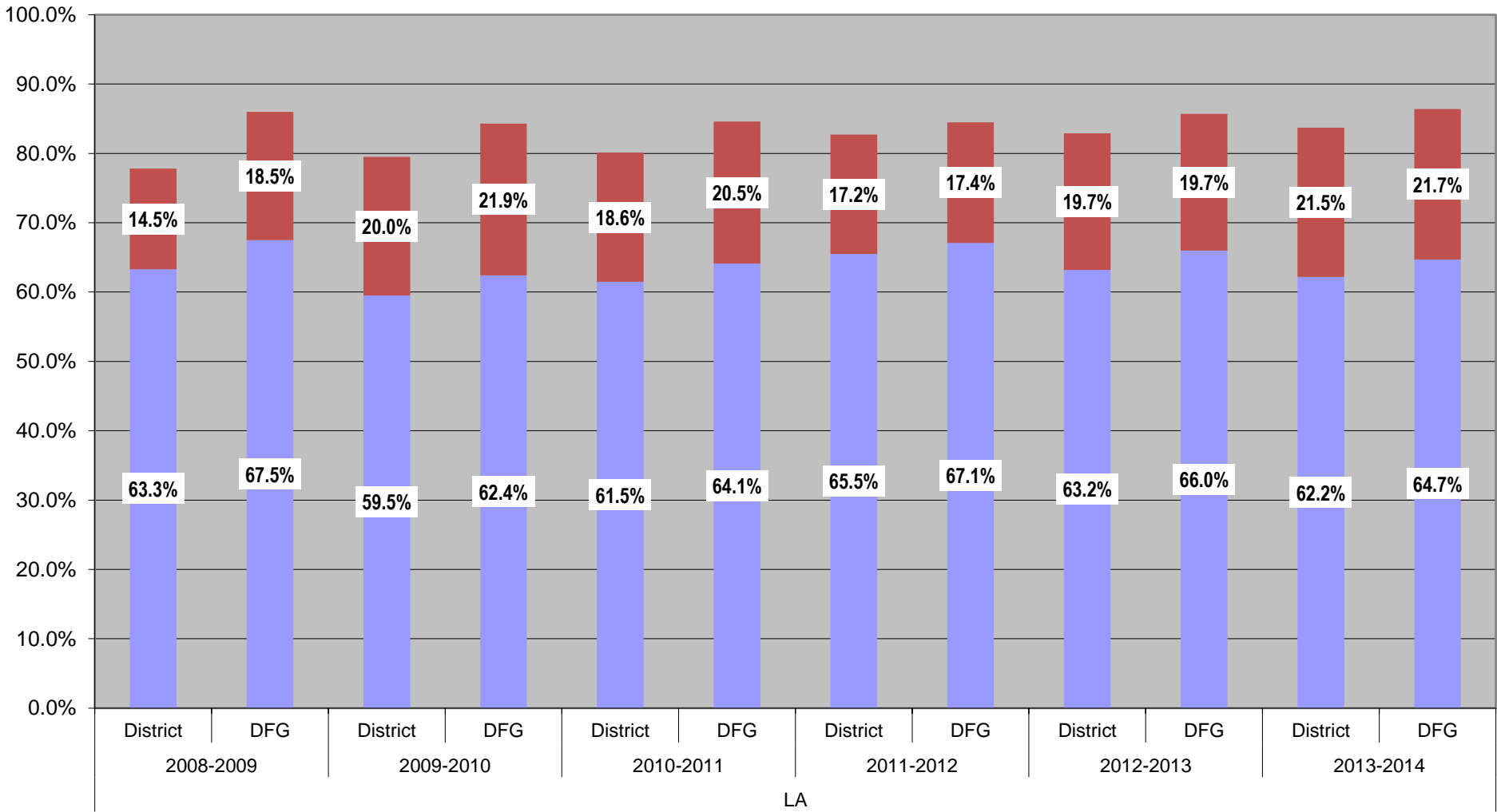
NJASK Results - Grades 6-8



LANGUAGE ARTS

Aggregate Report Language Arts Grades 3-11

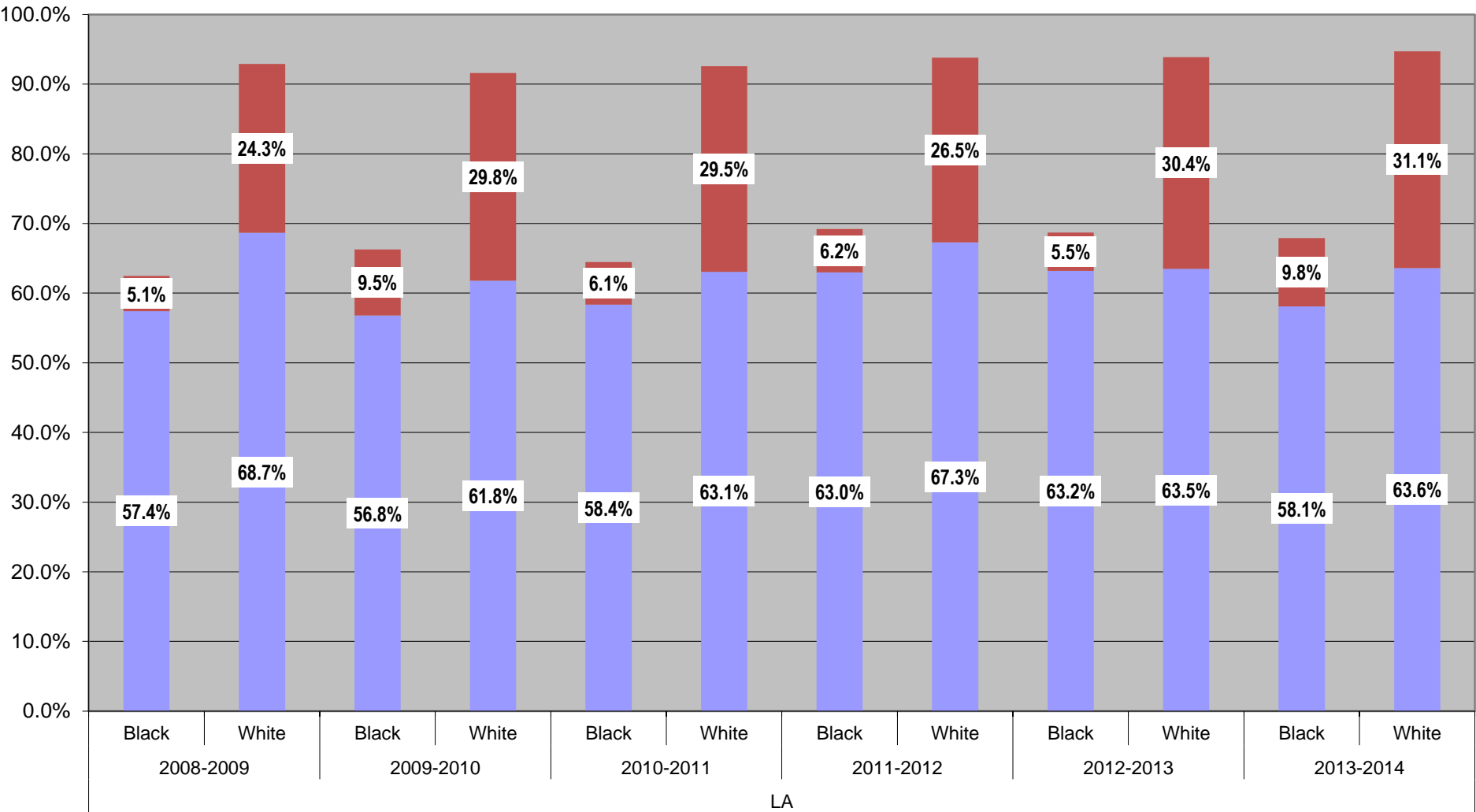
■ % Proficient ■ % Advanced Proficient



LA

Aggregate Report Language Arts Grades 3-11

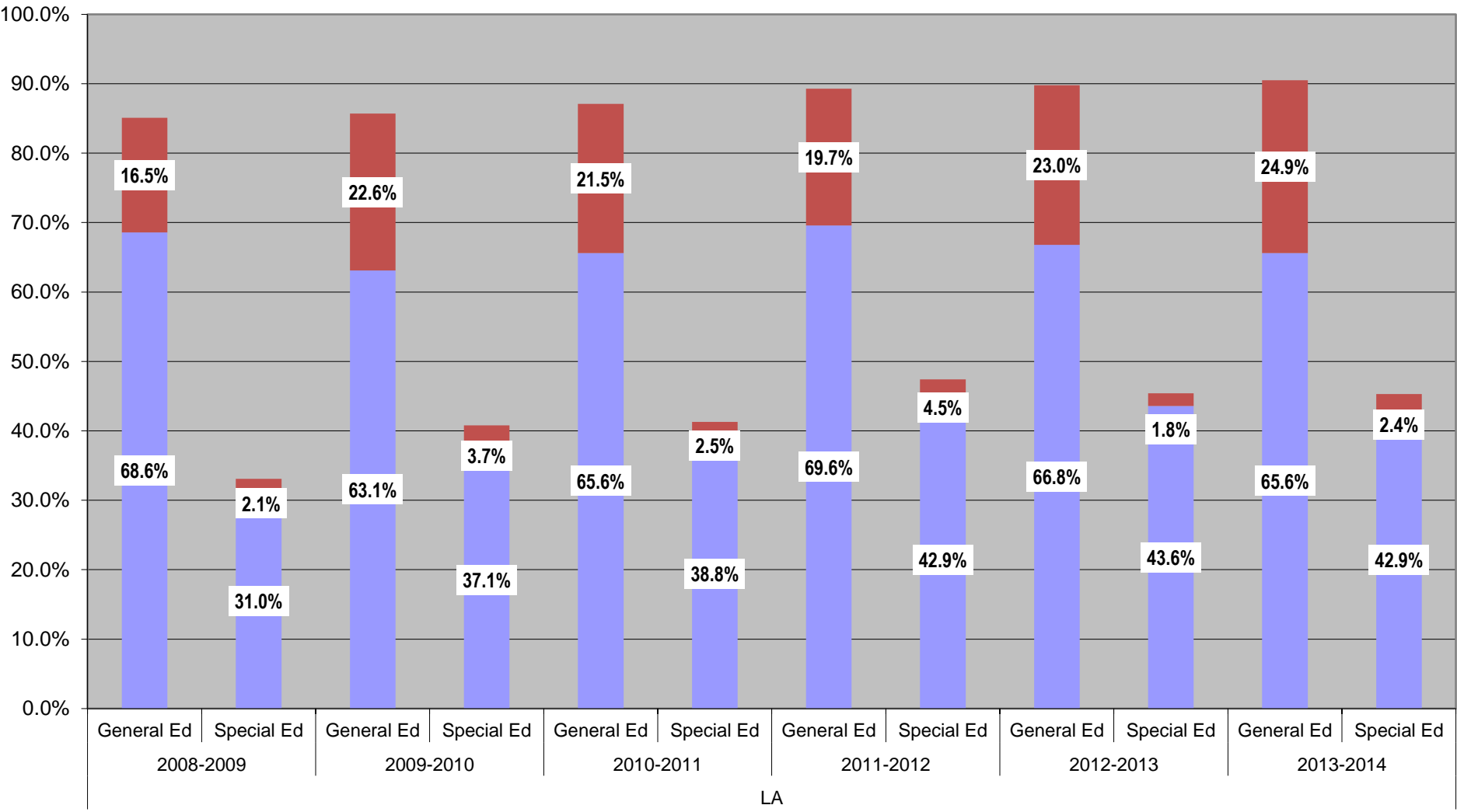
■ % Proficient ■ % Advanced Proficient



LA

Aggregate Report Language Arts Grades 3-11

■ % Proficient ■ % Advanced Proficient



LA

District-DFG
Proficient/ Advanced Proficient
LANGUAGE ARTS

Language Arts

	Grade 3		Grade 4		Grade 5		Grade 6		Grade 7		Grade 8		Grade 11	
	District	DFG	District	DFG	District	DFG	District	DFG	District	DFG	District	DFG	District	DFG
2007-2008					70.6%	77.9%	62.2%	76.5%	74.90%	87.00%	82.6%	93.5%	85.8%	93.8%
2008-2009	74.7%	79.3%	74.8%	80.2%	73.3%	82.7%	75.7%	85.2%	74.1%	87.30%	84.9%	94.1%	87.0%	94.4%
2009-2010	74.8%	75.9%	77.4%	77.1%	76.1%	80.0%	72.4%	82.5%	78.5%	86.20%	89.4%	94.0%	90.1%	96.2%
2010-2011	78.6%	78.9%	78.7%	80.0%	76.7%	80.2%	76.0%	82.6%	70.9%	82.30%	87.4%	93.8%	94.6%	96.5%
2011-2012	81.9%	82.2%	78.4%	76.2%	78.8%	80.3%	78.7%	82.7%	76.5%	80.5%	91.6%	94.0%	94.2%	97.3%
2012-2013	82.5%	82.8%	78.6%	78.6%	78.6%	79.6%	79.3%	84.0%	81.6%	84.6%	86.8%	93.6%	96.4%	97.4%
2013-2014	81.9%	83.9%	80.0%	79.9%	82.1%	82.0%	80.7%	85.1%	77.5%	83.7%	89.1%	93.0%	95.9%	98.1%

Language Arts

	Grade 3		Grade 4		Grade 5		Grade 6		Grade 7		Grade 8		Grade 11	
	GAP		GAP		GAP		GAP		GAP		GAP		GAP	
2007-2008	0.0		0.0		-7.3		-14.3		-12.1		-10.9		-8.0	
2008-2009	-4.6		-5.4		-9.4		-9.5		-13.2		-9.2		-7.4	
2009-2010	-1.1		0.3		-3.9		-10.1		-7.7		-4.6		-6.1	
2010-2011	-0.3		-1.3		-3.5		-6.6		-11.4		-6.4		-1.9	
2011-2012	-0.3		2.2		-1.5		-4.0		-4.0		-2.4		-3.1	
2012-2013	-0.3		0.0		-1.0		-4.7		-3.0		-6.8		-1.0	
2013-2014	-2.0		0.1		0.1		-4.4		-6.2		-3.9		-2.2	

- State changes in assessments
 - Grades 5-8 were changed in 2007/2008
 - Grades 3-4 were changed in 2008/2009
- Common core assessment questions were introduced in 2012-2013.

District-DFG
Advanced Proficient
LANGUAGE ARTS

Language Arts

	Grade 3		Grade 4		Grade 5		Grade 6		Grade 7		Grade 8		Grade 11	
	District	DFG	District	DFG	District	DFG	District	DFG	District	DFG	District	DFG	District	DFG
2007-2008					9.6%	8.1%	2.1%	4.7%	15.1%	26.5%	14.3%	20.0%	18.7%	22.8%
2008-2009	10.5%	11.0%	12.5%	12.1%	12.7%	15.5%	10.3%	13.6%	24.3%	31.2%	9.9%	20.9%	22.6%	25.9%
2009-2010	9.4%	10.7%	22.2%	16.8%	17.8%	15.8%	13.3%	14.3%	24.8%	31.0%	25.1%	32.0%	29.2%	34.3%
2010-2011	13.5%	12.8%	16.6%	13.6%	13.1%	12.3%	13.4%	13.4%	20.0%	22.7%	23.6%	34.1%	32.9%	37.1%
2011-2012	7.8%	7.2%	12.4%	8.3%	11.5%	12.6%	17.0%	12.3%	20.5%	19.7%	24.5%	26.3%	30.3%	38.0%
2012-2013	11.0%	8.1%	21.2%	16.4%	19.9%	16.6%	7.8%	9.0%	27.4%	24.5%	16.7%	21.0%	36.3%	45.4%
2013-2014	9.4%	8.6%	12.8%	7.8%	19.0%	16.2%	19.1%	16.9%	23.8%	27.9%	21.8%	22.9%	48.3%	55.1%

Language Arts

	Grade 3	Grade 4	Grade 5	Grade 6	Grade 7	Grade 8	Grade 11
	2007-2008	0.0	0.0	1.5	-2.6	-11.4	-5.7
2008-2009	-0.5	0.4	-2.8	-3.3	-6.9	-11.0	-3.3
2009-2010	-1.3	5.4	2.0	-1.0	-6.2	-6.9	-5.1
2010-2011	0.7	3.0	0.8	0.0	-2.7	-10.5	-4.2
2011-2012	0.6	4.1	-1.1	4.7	0.8	-1.8	-7.7
2012-2013	2.9	4.8	3.3	-1.2	2.9	-4.3	-9.1
2013-2013	0.8	5.0	2.8	2.2	-4.1	-1.1	-6.8

- State changes in assessments
 - Grades 5-8 were changed in 2007/2008
 - Grades 3-4 were changed in 2008/2009
- Common core assessment questions were introduced in 2012-2013.

Ethnicity Proficient/ Advanced Proficient LANGUAGE ARTS														
Language Arts														
	Grade 3		Grade 4		Grade 5		Grade 6		Grade 7		Grade 8		Grade 11	
	Black	White	Black	White	Black	White	Black	White	Black	White	Black	White	Black	White
2007-2008					52.6%	91.7%	41.5%	85.4%	61.8%	91.4%	72.3%	96.3%	76.7%	98.3%
2008-2009	51.4%	89.3%	53.9%	91.1%	57.7%	89.5%	57.9%	95.6%	59.3%	93.2%	75.4%	96.7%	77.9%	97.3%
2009-2010	56.2%	87.7%	56.1%	90.6%	57.9%	90.5%	56.6%	89.9%	64.3%	94.3%	82.7%	96.7%	85.3%	97.5%
2010-2011	56.6%	90.3%	61.3%	89.0%	54.9%	91.7%	57.3%	93.6%	52.2%	89.6%	77.8%	97.6%	89.9%	100.0%
2011-2012	64.5%	92.7%	57.2%	92.0%	62.8%	91.1%	57.8%	93.5%	59.0%	91.9%	83.7%	98.6%	90.4%	99.4%
2012-2013	65.8%	91.2%	55.2%	93.2%	58.3%	92.1%	60.0%	92.9%	65.3%	95.1%	75.2%	97.9%	95.3%	97.6%
2013-2014	59.6%	92.6%	55.1%	92.5%	63.9%	94.9%	58.0%	94.6%	56.5%	93.0%	77.6%	97.3%	93.3%	99.5%
Language Arts														
	Grade 3		Grade 4		Grade 5		Grade 6		Grade 7		Grade 8		Grade 11	
	GAP		GAP		GAP		GAP		GAP		GAP		GAP	
2007-2008	0.0		0.0		-39.1		-43.9		-29.6		-24.0		-21.6	
2008-2009	-37.9		-37.2		-31.8		-37.7		-33.9		-21.3		-19.4	
2009-2010	-31.5		-34.5		-32.6		-33.3		-30.0		-14.0		-12.2	
2010-2011	-33.7		-27.7		-36.8		-36.3		-37.4		-19.8		-10.1	
2011-2012	-28.2		-34.8		-28.3		-35.7		-32.9		-14.9		-9.0	
2012-2013	-25.4		-38.0		-33.8		-32.9		-29.8		-22.7		-2.3	
2013-2014	-33.0		-37.4		-31.0		-36.6		-36.5		-19.7		-6.2	

- State changes in assessments
 - Grades 5-8 were changed in 2007/2008
 - Grades 3-4 were changed in 2008/2009
- Common core assessment questions were introduced in 2012-2013.

Ethnicity
Advanced Proficient
LANGUAGE ARTS

Language Arts

	Grade 3		Grade 4		Grade 5		Grade 6		Grade 7		Grade 8		Grade 11	
	Black	White	Black	White	Black	White	Black	White	Black	White	Black	White	Black	White
2007-2008					2.2%	18.6%	0.9%	3.9%	5.6%	26.9%	5.4%	26.3%	6.1%	35.1%
2008-2009	3.4%	15.6%	4.7%	18.7%	6.0%	18.2%	3.3%	18.7%	7.9%	45.2%	3.6%	18.7%	6.6%	41.9%
2009-2010	1.8%	13.7%	9.2%	32.8%	7.4%	26.1%	4.0%	20.9%	14.7%	37.8%	13.1%	39.8%	13.8%	48.5%
2010-2011	4.8%	18.6%	5.2%	24.7%	4.4%	19.5%	1.5%	23.9%	5.3%	34.7%	10.5%	40.5%	10.1%	57.7%
2011-2012	2.4%	11.3%	4.0%	19.6%	2.2%	17.8%	4.2%	25.6%	4.9%	35.4%	10.0%	39.2%	12.6%	54.4%
2012-2013	2.7%	15.1%	5.7%	31.1%	6.1%	29.7%	1.1%	12.3%	7.9%	41.4%	3.5%	28.0%	10.4%	67.6%
2013-2014	3.8%	12.6%	3.4%	18.7%	6.7%	27.7%	4.8%	29.2%	8.8%	35.4%	5.9%	35.1%	28.2%	77.0%

Language Arts

	Grade 3	Grade 4	Grade 5	Grade 6	Grade 7	Grade 8	Grade 11
	GAP	GAP	GAP	GAP	GAP	GAP	GAP
2007-2008	0.0	0.0	-16.4	-3.0	-21.3	-20.9	-29.0
2008-2009	-12.2	-14.0	-12.2	-15.4	-37.3	-15.1	-35.3
2009-2010	-11.9	-23.6	-18.7	-16.9	-23.1	-26.7	-34.7
2010-2011	-13.8	-19.5	-15.1	-22.4	-29.4	-30.0	-47.6
2011-2012	-8.9	-15.6	-15.6	-21.4	-30.5	-29.2	-41.8
2012-2013	-12.4	-25.4	-23.6	-11.2	-33.5	-24.5	-57.2
2013-2014	-8.8	-15.3	-21.0	-24.4	-26.6	-29.2	-48.8

- State changes in assessments
 - Grades 5-8 were changed in 2007/2008
 - Grades 3-4 were changed in 2008/2009
- Common core assessment questions were introduced in 2012-2013.

Special Ed/General Ed
Proficient/ Advanced Proficient
LANGUAGE ARTS

Language Arts

	Grade 3		Grade 4		Grade 5		Grade 6		Grade 7		Grade 8		Grade 11	
	SE	Gen Ed	SE	Gen Ed	SE	Gen Ed	SE	Gen Ed	SE	Gen Ed	SE	Gen Ed	SE	Gen Ed
2007-2008					23.2%	78.7%	23.3%	69.2%	33.3%	83.6%	49.3%	88.9%	50.9%	91.3%
2008-2009	34.9%	79.1%	19.2%	82.2%	27.1%	81.3%	17.4%	85.6%	30.5%	81.6%	49.4%	92.7%	48.4%	94.3%
2009-2010	44.3%	79.4%	53.1%	80.8%	33.9%	82.6%	23.2%	81.0%	18.5%	88.0%	50.0%	96.4%	67.7%	95.0%
2010-2011	45.4%	85.6%	47.4%	85.1%	34.8%	83.7%	25.8%	85.2%	25.0%	78.8%	42.7%	94.9%	71.7%	98.5%
2011-2012	42.7%	89.2%	41.5%	86.4%	40.5%	86.6%	40.0%	84.9%	28.4%	85.6%	65.0%	95.6%	76.6%	98.1%
2012-2013	52.9%	87.1%	36.4%	85.8%	36.4%	86.8%	33.8%	87.9%	44.1%	88.2%	48.6%	94.7%	79.2%	96.4%
2013-2014	50.0%	87.3%	38.4%	87.6%	39.8%	90.2%	37.6%	89.6%	38.6%	85.2%	47.0%	95.1%	75.5%	99.3%

Language Arts

	Grade 3		Grade 4		Grade 5		Grade 6		Grade 7		Grade 8		Grade 11	
	GAP		GAP		GAP		GAP		GAP		GAP		GAP	
2007-2008	0.0		0.0		-55.5		-45.9		-50.3		-39.6		-40.4	
2008-2009	-44.2		-63.0		-54.2		-68.2		-51.1		-43.3		-45.9	
2009-2010	-35.1		-27.7		-48.7		-57.8		-69.5		-46.4		-27.3	
2010-2011	-40.2		-37.7		-48.9		-59.4		-53.8		-52.2		-26.8	
2011-2012	-46.5		-44.9		-46.1		-44.9		-57.2		-30.6		-21.5	
2012-2013	-34.2		-49.4		-50.4		-54.1		-44.1		-46.1		-17.2	
2013-2014	-37.3		-49.2		-50.4		-52.0		-46.6		-48.1		-23.8	

- State changes in assessments
 - Grades 5-8 were changed in 2007/2008
 - Grades 3-4 were changed in 2008/2009
- Common core assessment questions were introduced in 2012-2013.

Special Ed/General Ed
Advanced Proficient
LANGUAGE ARTS

Language Arts

	Grade 3		Grade 4		Grade 5		Grade 6		Grade 7		Grade 8		Grade 11	
	SE	Gen Ed	SE	Gen Ed	SE	Gen Ed	SE	Gen Ed	SE	Gen Ed	SE	Gen Ed	SE	Gen Ed
2007-2008					0.0%	11.3%	0.0%	2.5%	2.7%	17.7%	1.4%	16.8%	0.0%	21.5%
2008-2009	7.0%	11.0%	1.9%	14.1%	0.0%	15.0%	0.0%	12.0%	3.4%	27.9%	1.3%	11.7%	3.1%	26.1%
2009-2010	1.6%	10.6%	10.2%	23.6%	5.1%	20.0%	1.4%	15.4%	1.5%	28.5%	3.1%	29.2%	4.8%	33.8%
2010-2011	3.5%	15.6%	5.1%	19.0%	3.0%	14.8%	0.0%	15.9%	0.0%	23.3%	1.6%	27.1%	3.8%	37.7%
2011-2012	0.0%	9.2%	3.2%	14.5%	4.8%	12.9%	1.5%	19.5%	4.5%	23.6%	6.7%	27.5%	11.7%	34.5%
2012-2013	1.4%	12.7%	1.3%	24.7%	2.3%	23.6%	0.0%	9.2%	2.9%	31.6%	1.4%	19.9%	4.2%	40.9%
2013-2014	0.0%	10.8%	1.4%	14.9%	6.0%	21.5%	3.5%	22.2%	0.0%	28.2%	1.5%	25.0%	3.8%	55.0%

Language Arts

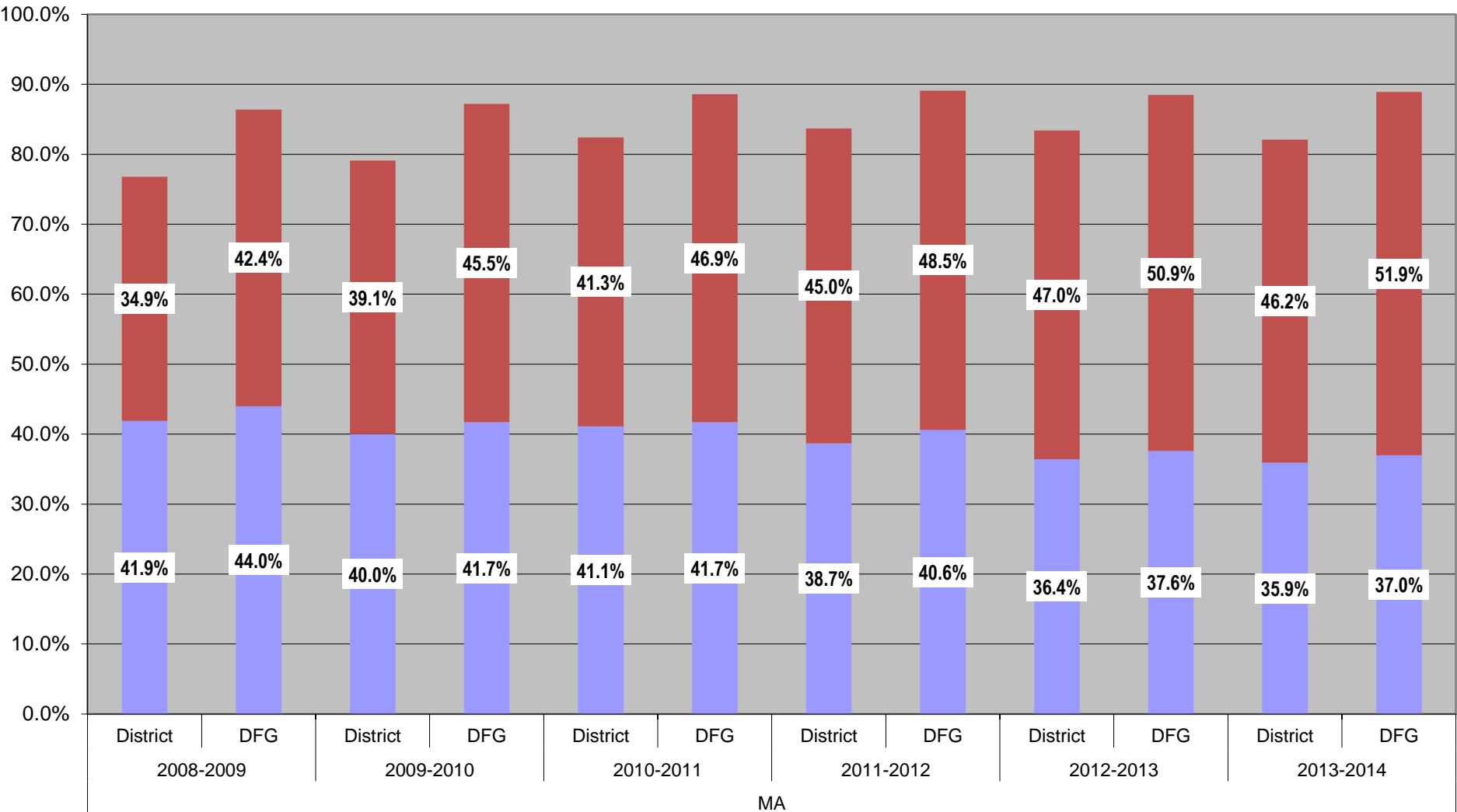
	Grade 3	Grade 4	Grade 5	Grade 6	Grade 7	Grade 8	Grade 11
	GAP	GAP	GAP	GAP	GAP	GAP	GAP
2007-2008	0.0	0.0	-11.3	-2.5	-15.0	-15.4	-21.5
2008-2009	-4.0	-12.2	-15.0	-12.0	-24.5	-10.4	-23.0
2009-2010	-9.0	-13.4	-14.9	-14.0	-27.0	-26.1	-29.0
2010-2011	-12.1	-13.9	-11.8	-15.9	-23.3	-25.5	-33.9
2011-2012	-9.2	-11.3	-8.1	-18.0	-19.1	-20.8	-22.8
2012-2013	-11.3	-23.4	-21.3	-9.2	-28.7	-18.5	-36.7
2013-2014	-10.8	-13.5	-15.5	-18.7	-28.2	-23.5	-51.2

- State changes in assessments
 - Grades 5-8 were changed in 2007/2008
 - Grades 3-4 were changed in 2008/2009
- Common core assessment questions were introduced in 2012-2013.

MATH

Aggregate Report Math Grades 3-11

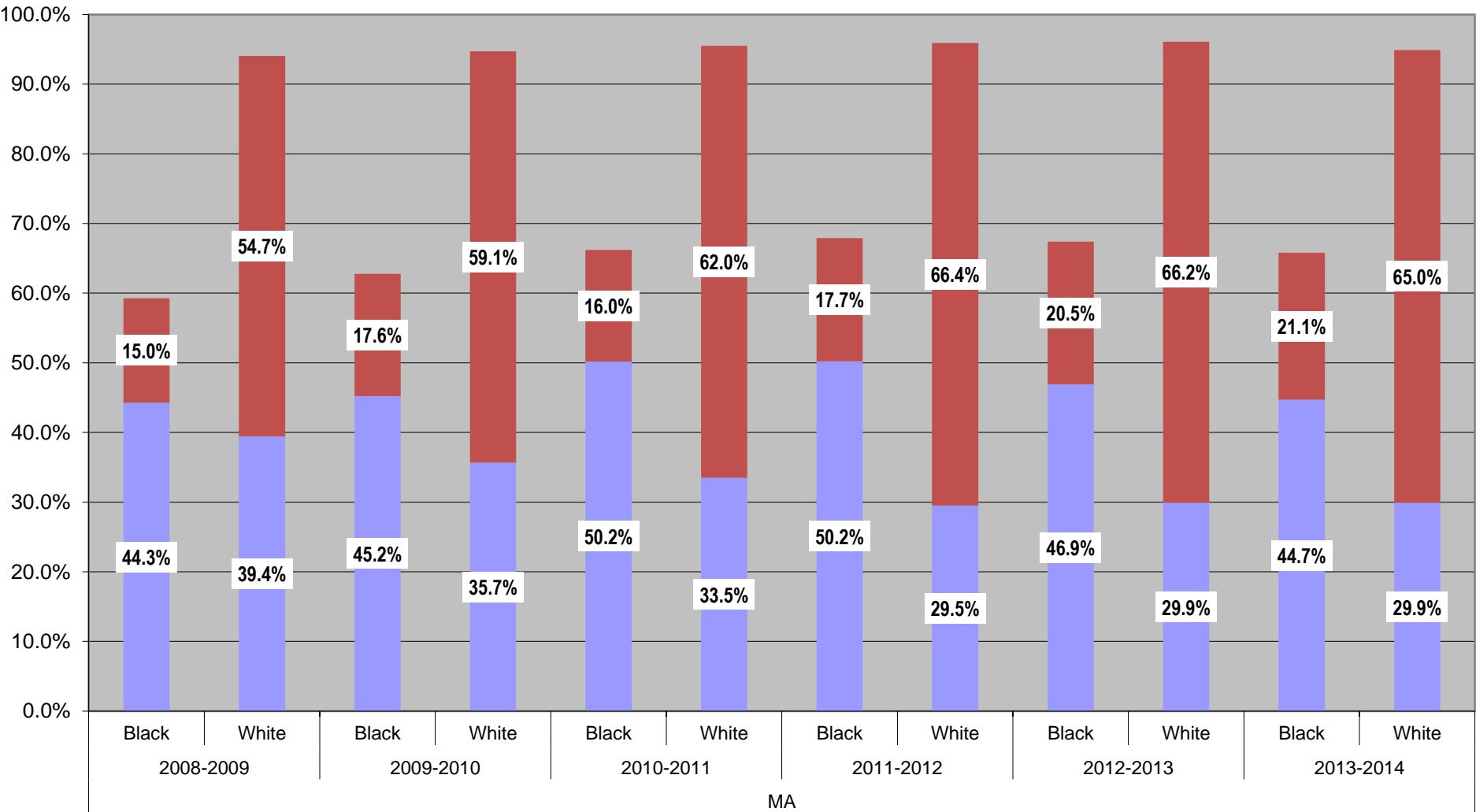
■ % Proficient ■ % Advanced Proficient



MA

Aggregate Report Math Grades 3-11

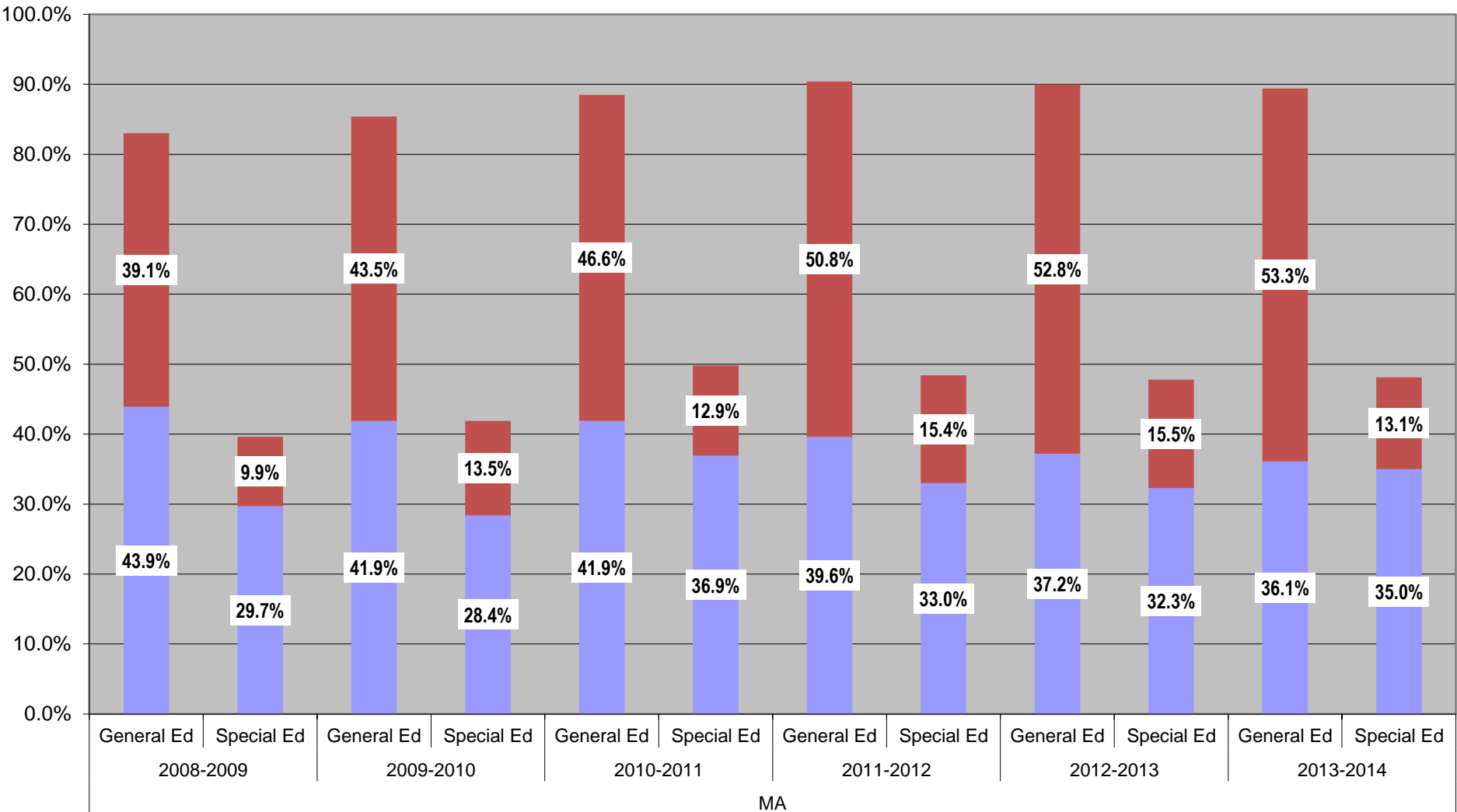
■ % Proficient
 ■ % Advanced Proficient



MA

Aggregate Report Math Grades 3-11

■ % Proficient ■ % Advanced Proficient



MA

District-DFG
Proficient/ Advanced Proficient
MATH

Math

	Grade 3		Grade 4		Grade 5		Grade 6		Grade 7		Grade 8		Grade 11	
	District	DFG	District	DFG	District	DFG	District	DFG	District	DFG	District	DFG	District	DFG
2007-2008					80.4%	88.8%	75.6%	86.7%	68.4%	80.3%	69.7%	83.6%	79.7%	90.0%
2008-2009	81.2%	87.8%	77.0%	86.2%	83.3%	90.0%	75.4%	85.8%	70.3%	82.0%	72.8%	85.6%	76.5%	88.4%
2009-2010	85.0%	90.0%	84.1%	88.9%	82.4%	91.1%	77.8%	86.1%	72.8%	81.9%	72.0%	83.6%	78.8%	89.2%
2010-2011	86.8%	90.9%	86.6%	90.7%	87.0%	91.9%	83.8%	89.8%	75.4%	82.6%	74.4%	86.4%	82.5%	88.9%
2011-2012	86.4%	91.1%	85.9%	90.3%	88.9%	93.2%	87.5%	91.0%	76.3%	80.8%	77.3%	87.1%	81.7%	91.1%
2012-2013	84.4%	90.7%	85.1%	91.0%	88.6%	91.7%	85.8%	90.3%	79.2%	81.1%	73.8%	84.9%	85.4%	91.4%
2013-2014	80.4%	89.3%	82.2%	88.9%	88.0%	91.7%	83.9%	91.1%	78.0%	83.9%	86.0%	86.9%	81.6%	91.8%

Math

	Grade 3	Grade 4	Grade 5	Grade 6	Grade 7	Grade 8	Grade 11
	GAP	GAP	GAP	GAP	GAP	GAP	GAP
2007-2008	0.0	0.0	-8.4	-11.1	-11.9	-13.9	-10.3
2008-2009	-6.6	-9.2	-6.7	-10.4	-11.7	-12.8	-11.9
2009-2010	-5.0	-4.8	-8.7	-8.3	-9.1	-11.6	-10.4
2010-2011	-4.1	-4.1	-4.9	-6.0	-7.2	-12.0	-6.4
2011-2012	-4.7	-4.4	-4.3	-3.5	-4.5	-9.8	-9.4
2012-2013	-6.3	-5.9	-3.1	-4.5	-1.9	-11.1	-6.0
2013-2014	-8.9	-6.7	-3.7	-7.2	-5.9	-0.9	-10.2

- State changes in assessments
 - Grades 5-8 were changed in 2007/2008
 - Grades 3-4 were changed in 2008/2009
- Common core assessment questions were introduced in 2012-2013.

District-DFG
Advanced Proficient
MATH

Math

	Grade 3		Grade 4		Grade 5		Grade 6		Grade 7		Grade 8		Grade 11	
	District	DFG	District	DFG	District	DFG	District	DFG	District	DFG	District	DFG	District	DFG
2007-2008					35.6%	42.2%	31.4%	32.9%	24.4%	31.8%	26.4%	39.0%	30.3%	42.5%
2008-2009	42.1%	45.5%	39.1%	40.0%	40.9%	49.2%	34.5%	40.1%	26.5%	37.1%	28.4%	43.9%	31.4%	41.2%
2009-2010	46.3%	51.8%	44.8%	49.8%	52.5%	53.6%	36.2%	37.1%	29.6%	39.5%	29.1%	43.9%	34.6%	42.7%
2010-2011	51.0%	54.2%	41.8%	46.4%	48.6%	56.8%	45.4%	41.9%	34.7%	38.9%	30.2%	46.9%	36.2%	43.4%
2011-2012	52.8%	53.8%	49.7%	49.8%	54.5%	54.9%	47.4%	50.0%	37.8%	37.8%	35.1%	46.9%	33.9%	46.7%
2012-2013	51.2%	59.4%	46.6%	51.3%	61.1%	62.4%	51.5%	47.3%	40.1%	41.5%	38.2%	47.0%	36.0%	48.5%
2013-2014	51.5%	58.4%	45.8%	53.4%	52.6%	56.4%	50.0%	52.8%	39.3%	40.9%	52.4%	52.4%	36.7%	50.0%

Math

	Grade 3	Grade 4	Grade 5	Grade 6	Grade 7	Grade 8	Grade 11
	GAP	GAP	GAP	GAP	GAP	GAP	GAP
2007-2008	0.0	0.0	-6.6	-1.5	-7.4	-12.6	-12.2
2008-2009	-3.4	-0.9	-8.3	-5.6	-10.6	-15.5	-9.8
2009-2010	-5.5	-5.0	-1.1	-0.9	-9.9	-14.8	-8.1
2010-2011	-3.2	-4.6	-8.2	3.5	-4.2	-16.7	-7.2
2011-2012	-1.0	-0.1	-0.4	-2.6	0.0	-11.8	-12.8
2012-2013	-8.2	-4.7	-1.3	4.2	-1.4	-8.8	-12.5
2013-2013	-6.9	-7.6	-3.8	-2.8	-1.6	0.0	-13.3

- State changes in assessments
 - Grades 5-8 were changed in 2007/2008
 - Grades 3-4 were changed in 2008/2009
- Common core assessment questions were introduced in 2012-2013.

Ethnicity Proficient/ Advanced Proficient MATH														
Math														
	Grade 3		Grade 4		Grade 5		Grade 6		Grade 7		Grade 8		Grade 11	
	Black	White	Black	White	Black	White	Black	White	Black	White	Black	White	Black	White
2007-2008					66.4%	96.1%	59.6%	94.4%	49.8%	91.9%	50.8%	92.0%	66.5%	96.5%
2008-2009	60.2%	94.8%	56.5%	93.5%	68.2%	97.3%	58.5%	94.1%	54.0%	90.4%	56.7%	94.0%	61.1%	93.5%
2009-2010	67.6%	96.5%	65.3%	97.4%	68.2%	95.2%	60.2%	94.9%	58.2%	90.0%	56.5%	91.2%	66.1%	96.3%
2010-2011	69.9%	95.7%	72.3%	95.7%	74.2%	96.2%	68.9%	96.5%	57.6%	92.9%	57.7%	93.7%	68.7%	97.8%
2011-2012	67.5%	96.0%	69.4%	96.3%	79.4%	95.9%	75.1%	96.9%	57.8%	93.9%	59.5%	94.3%	69.1%	97.7%
2012-2013	65.1%	97.1%	64.6%	98.3%	76.4%	97.0%	71.7%	97.2%	62.7%	93.5%	55.3%	91.7%	76.3%	96.4%
2013-2014	62.7%	89.7%	57.8%	95.1%	70.7%	98.0%	66.7%	94.9%	55.9%	94.2%	74.0%	96.2%	69.2%	97.3%
Math														
	Grade 3		Grade 4		Grade 5		Grade 6		Grade 7		Grade 8		Grade 11	
	GAP		GAP		GAP		GAP		GAP		GAP		GAP	
2007-2008	0.0		0.0		-29.7		-34.8		-42.1		-41.2		-30.0	
2008-2009	-34.6		-37.0		-29.1		-35.6		-36.4		-37.3		-32.4	
2009-2010	-28.9		-32.1		-27.0		-34.7		-31.8		-34.7		-30.2	
2010-2011	-25.8		-23.4		-22.0		-27.6		-35.3		-36.0		-29.1	
2011-2012	-28.5		-26.9		-16.5		-21.8		-36.1		-34.8		-28.6	
2012-2013	-32.0		-33.7		-20.6		-25.5		-30.8		-36.4		-20.1	
2013-2014	-27.0		-37.3		-27.3		-28.2		-38.3		-22.2		-28.1	

- State changes in assessments
 - Grades 5-8 were changed in 2007/2008
 - Grades 3-4 were changed in 2008/2009
- Common core assessment questions were introduced in 2012-2013.

Ethnicity
Advanced Proficient
MATH

Math

	Grade 3		Grade 4		Grade 5		Grade 6		Grade 7		Grade 8		Grade 11	
	Black	White	Black	White	Black	White	Black	White	Black	White	Black	White	Black	White
2007-2008					14.7%	60.3%	11.7%	55.1%	10.8%	40.9%	9.5%	47.9%	12.2%	56.1%
2008-2009	20.5%	56.7%	14.7%	57.9%	22.0%	58.6%	17.8%	55.2%	11.6%	44.6%	10.9%	50.0%	8.8%	56.8%
2009-2010	21.4%	62.0%	20.8%	62.3%	27.6%	72.9%	14.2%	56.9%	15.9%	45.0%	10.7%	50.5%	15.1%	61.3%
2010-2011	18.1%	70.0%	16.2%	56.5%	22.0%	67.9%	18.6%	67.0%	14.4%	55.5%	12.7%	52.6%	11.7%	61.4%
2011-2012	23.7%	72.0%	16.8%	68.1%	27.2%	72.2%	20.2%	67.4%	13.6%	57.4%	15.0%	56.0%	11.0%	65.7%
2012-2013	28.8%	62.1%	19.4%	64.2%	33.5%	78.2%	26.2%	70.6%	17.4%	57.8%	13.6%	59.9%	9.0%	68.5%
2013-2014	29.1%	61.9%	22.4%	55.4%	22.7%	72.0%	16.9%	71.4%	17.9%	53.7%	26.5%	73.7%	15.0%	65.8%

Math

	Grade 3	Grade 4	Grade 5	Grade 6	Grade 7	Grade 8	Grade 11
	GAP	GAP	GAP	GAP	GAP	GAP	GAP
2007-2008	0.0	0.0	-45.6	-43.4	-30.1	-38.4	-43.9
2008-2009	-36.2	-43.2	-36.6	-37.4	-33.0	-39.1	-48.0
2009-2010	-40.6	-41.5	-45.3	-42.7	-29.1	-39.8	-46.2
2010-2011	-51.9	-40.3	-45.9	-48.4	-41.1	-39.9	-49.7
2011-2012	-48.3	-51.3	-45.0	-47.2	-43.8	-41.0	-54.7
2012-2013	-33.3	-44.8	-44.7	-44.4	-40.4	-46.3	-59.5
2013-2014	-32.8	-33.0	-49.3	-54.5	-35.8	-47.2	-50.8

- State changes in assessments
 - Grades 5-8 were changed in 2007/2008
 - Grades 3-4 were changed in 2008/2009
- Common core assessment questions were introduced in 2012-2013.

Special Ed/General Ed
Proficient/ Advanced Proficient
MATH

Math

	Grade 3		Grade 4		Grade 5		Grade 6		Grade 7		Grade 8		Grade 11	
	SE	Gen Ed	SE	Gen Ed	SE	Gen Ed	SE	Gen Ed	SE	Gen Ed	SE	Gen Ed	SE	Gen Ed
2007-2008					44.9%	86.8%	36.7%	82.4%	26.7%	77.2%	26.1%	77.6%	40.4%	85.1%
2008-2009	58.1%	84.3%	45.1%	81.7%	58.6%	88.0%	24.6%	84.1%	30.0%	77.0%	35.4%	80.9%	31.7%	84.5%
2009-2010	75.4%	86.9%	67.3%	86.7%	44.1%	88.9%	31.9%	85.9%	18.5%	81.6%	18.7%	82.0%	46.8%	85.5%
2010-2011	64.0%	91.5%	68.0%	90.8%	63.6%	91.2%	49.3%	90.1%	29.7%	83.6%	18.0%	83.5%	44.2%	88.9%
2011-2012	53.7%	92.9%	61.7%	91.2%	57.1%	95.5%	47.7%	94.0%	25.4%	85.6%	30.5%	84.4%	51.3%	88.1%
2012-2013	57.1%	89.8%	51.3%	91.3%	59.1%	94.5%	45.6%	93.6%	38.8%	86.1%	31.9%	82.7%	47.8%	90.5%
2013-214	48.7%	86.2%	57.5%	86.9%	60.2%	93.4%	47.6%	91.6%	35.7%	86.6%	43.1%	92.0%	38.9%	88.5%

Math

	Grade 3	Grade 4	Grade 5	Grade 6	Grade 7	Grade 8	Grade 11
	GAP	GAP	GAP	GAP	GAP	GAP	GAP
2007-2008	0.0	0.0	-41.9	-45.7	-50.5	-51.5	-44.7
2008-2009	-26.2	-36.6	-29.4	-59.5	-47.0	-45.5	-52.8
2009-2010	-11.5	-19.4	-44.8	-54.0	-63.1	-63.3	-38.7
2010-2011	-27.5	-22.8	-27.6	-40.8	-53.9	-65.5	-44.7
2011-2012	-39.2	-29.5	-38.4	-46.3	-60.2	-53.9	-36.8
2012-2013	-32.7	-40.0	-35.4	-48.0	-47.3	-50.8	-42.7
2013-2014	-37.5	-29.4	-33.2	-44.0	-50.9	-48.9	-49.6

- State changes in assessments
 - Grades 5-8 were changed in 2007/2008
 - Grades 3-4 were changed in 2008/2009
- Common core assessment questions were introduced in 2012-2013.

Special Ed/General Ed
Advanced Proficient
MATH

Math

	Grade 3		Grade 4		Grade 5		Grade 6		Grade 7		Grade 8		Grade 11	
	SE	Gen Ed	SE	Gen Ed	SE	Gen Ed	SE	Gen Ed	SE	Gen Ed	SE	Gen Ed	SE	Gen Ed
2007-2008					5.8%	40.9%	10.0%	35.4%	8.0%	27.9%	7.2%	29.9%	0.0%	34.9%
2008-2009	27.9%	44.3%	17.6%	42.4%	8.6%	46.8%	4.3%	39.7%	6.7%	30.0%	7.6%	33.0%	4.8%	36.1%
2009-2010	29.5%	49.5%	26.5%	47.1%	15.3%	58.9%	7.2%	41.5%	1.5%	34.1%	7.8%	33.1%	11.3%	39.1%
2010-2011	29.1%	55.9%	15.4%	47.2%	21.2%	53.3%	6.2%	52.6%	4.7%	40.0%	0.0%	35.3%	5.8%	41.1%
2011-2012	23.2%	58.5%	20.2%	56.6%	22.6%	61.5%	12.3%	53.2%	7.5%	43.6%	5.1%	39.7%	10.5%	39.0%
2012-2013	21.4%	56.4%	16.7%	52.2%	25.0%	68.3%	14.7%	58.5%	9.0%	45.5%	8.3%	44.7%	8.7%	39.9%
2013-2014	17.1%	57.5%	19.2%	51.0%	18.1%	59.3%	10.7%	57.8%	8.6%	45.3%	12.3%	58.4%	1.9%	41.7%

Math

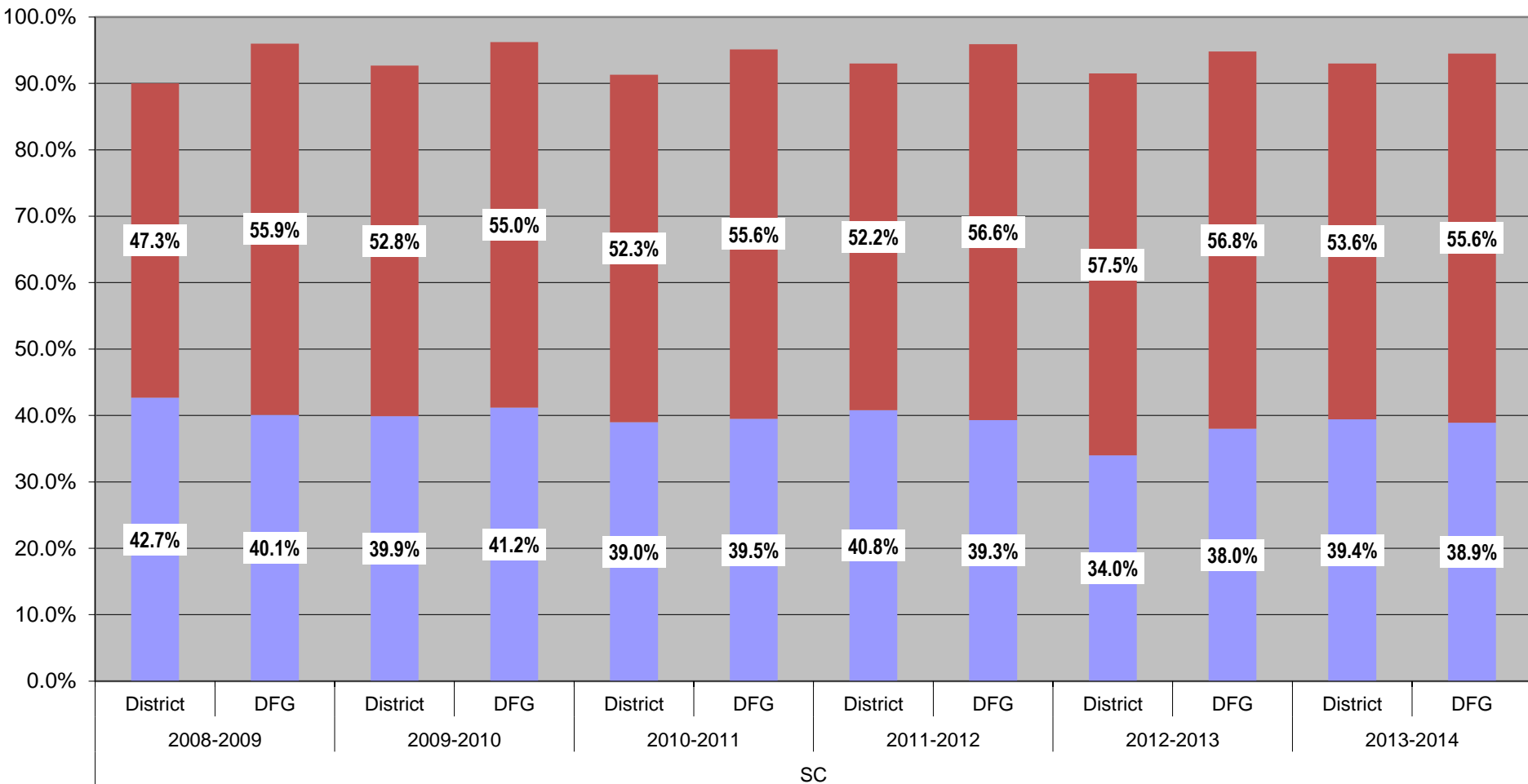
	Grade 3	Grade 4	Grade 5	Grade 6	Grade 7	Grade 8	Grade 11
	GAP	GAP	GAP	GAP	GAP	GAP	GAP
2007-2008	0.0	0.0	-35.1	-25.4	-19.9	-22.7	-34.9
2008-2009	-16.4	-24.8	-38.2	-35.4	-23.3	-25.4	-31.3
2009-2010	-20.0	-20.6	-43.6	-34.3	-32.6	-25.3	-27.8
2010-2011	-26.8	-31.8	-32.1	-46.4	-35.3	-35.3	-35.3
2011-2012	-35.3	-36.4	-38.9	-40.9	-36.1	-34.6	-28.5
2012-2013	-35.0	-35.5	-43.3	-43.8	-36.5	-36.4	-31.2
2013-2014	-40.4	-31.8	-41.2	-47.1	-36.7	-46.1	-39.8

- State changes in assessments
 - Grades 5-8 were changed in 2007/2008
 - Grades 3-4 were changed in 2008/2009
- Common core assessment questions were introduced in 2012-2013.

SCIENCE

Aggregate Report Science Grades 3-11

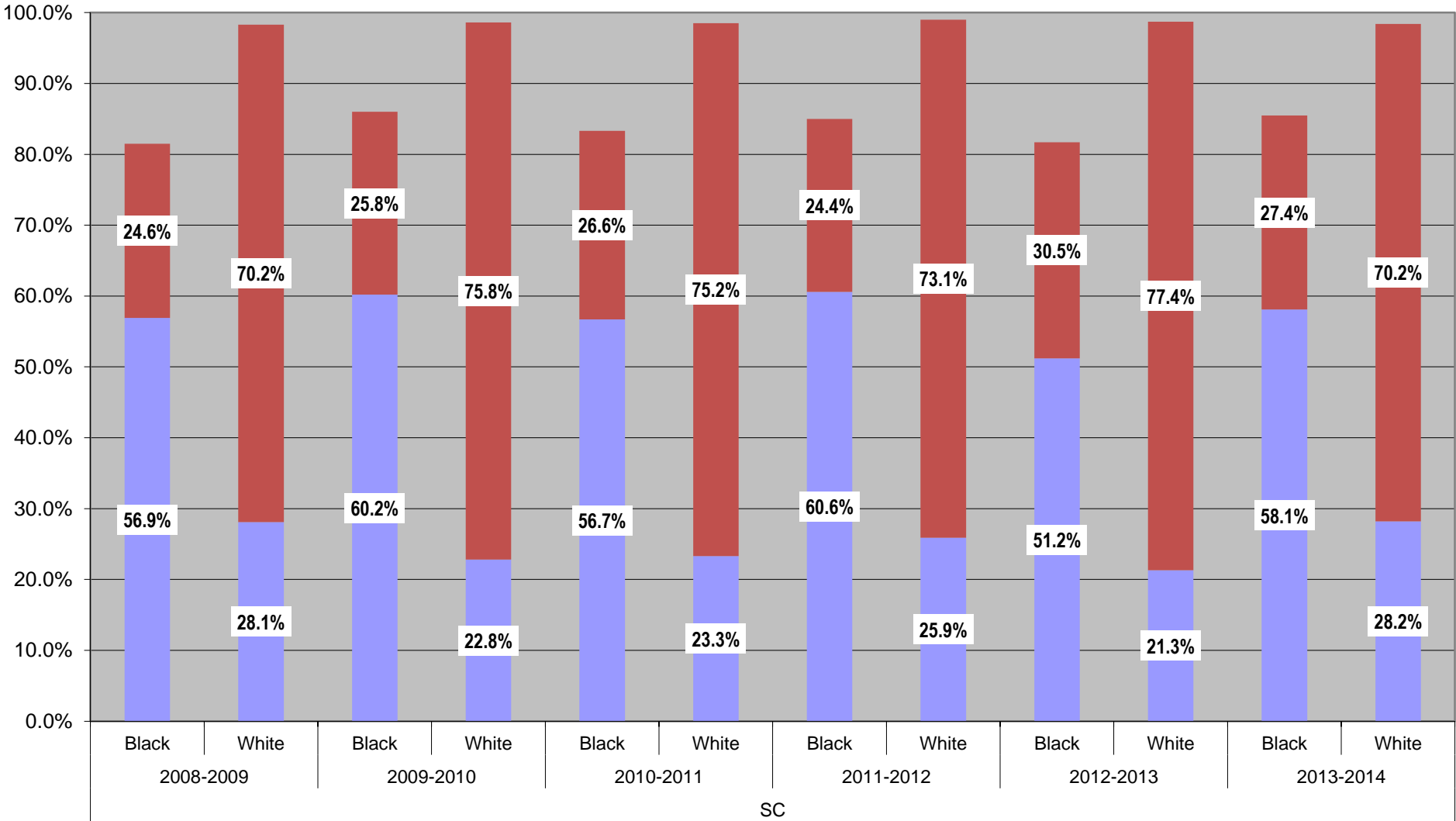
■ % Proficient ■ % Advanced Proficient



SC

**Aggregate Report
Science
Grades 4 & 8**

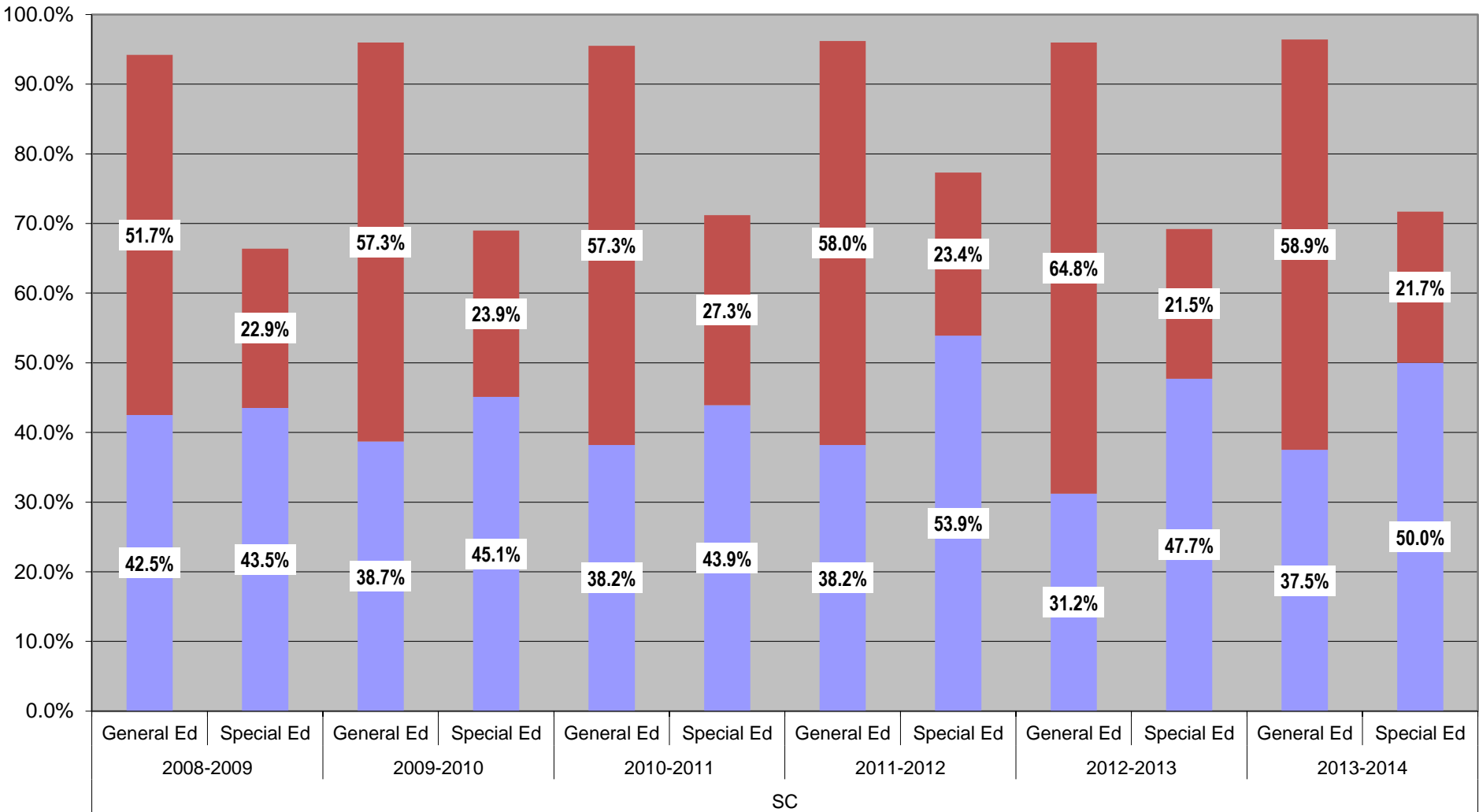
■ % Proficient ■ % Advanced Proficient



SC

Aggregate Report Science Grades 4 & 8

■ % Proficient ■ % Advanced Proficient



SC

District-DFG Proficient/ Advanced Proficient SCIENCE				
Science				
	Grade 4		Grade 8	
	District	DFG	District	DFG
2007-2008			86.9%	94.8%
2008-2009	94.8%	97.3%	85.3%	94.8%
2009-2010	97.4%	98.3%	87.4%	94.1%
2010-2011	95.5%	96.9%	87.2%	93.4%
2011-2012	96.1%	97.4%	89.7%	94.4%
2012-2013	95.5%	96.8%	86.4%	93.0%
2013-2014	96.3%	96.4%	89.6%	92.6%
Science				
	Grade 4		Grade 8	
	GAP		GAP	
2007-2008	0.0		-7.9	
2008-2009	-2.5		-9.5	
2009-2010	-0.9		-6.7	
2010-2011	-0.9		-6.7	
2011-2012	-1.3		-4.7	
2012-2013	-1.3		-6.6	
2013-2014	-0.1		-3.0	

District-DFG Advanced Proficient SCIENCE				
Science				
	Grade 4		Grade 8	
	District	DFG	District	DFG
2007-2008			39.70%	50.30%
2008-2009	63.30%	63.50%	32.10%	48.60%
2009-2010	63.10%	60.90%	41.10%	49.40%
2010-2011	68.40%	64.90%	36.20%	46.80%
2011-2012	63.00%	62.50%	40.10%	51.00%
2012-2013	64.50%	62.50%	48.60%	51.60%
2013-2014	66.20%	66.80%	41.10%	45.30%
Science				
	Grade 4		Grade 8	
2007-2008	0.0		-10.6	
2008-2009	-0.2		-16.5	
2009-2010	2.2		-8.3	
2010-2011	2.2		-8.3	
2011-2012	0.5		-10.9	
2012-2013	2.0		-3.0	
2013-2014	-0.6		-4.2	

Ethnicity Proficient/ Advanced Proficient SCIENCE				
Science				
	Grade 4		Grade 8	
	Black	White	Black	White
2007-2008			76.00%	99.50%
2008-2009	89.60%	99.50%	75.30%	96.70%
2009-2010	93.10%	100.00%	80.40%	96.70%
2010-2011	89.00%	99.60%	79.30%	97.10%
2011-2012	89.60%	99.70%	81.40%	98.10%
2012-2013	89.10%	99.70%	75.20%	97.40%
2013-2014	93.20%	98.50%	79.90%	98.10%
Science				
	Grade 4		Grade 8	
	GAP		GAP	
2007-2008	0.0		-23.5	
2008-2009	-9.9		-21.4	
2009-2010	-6.9		-16.3	
2010-2011	-6.9		-16.3	
2011-2012	-10.1		-16.7	
2012-2013	-10.6		-22.2	
2013-2014	-5.3		-18.2	

Ethnicity Advanced Proficient SCIENCE				
Science				
	Grade 4		Grade 8	
	Black	White	Black	White
2007-2008			19.40%	65.40%
2008-2009	38.00%	84.60%	14.20%	53.30%
2009-2010	32.90%	81.50%	20.10%	67.60%
2010-2011	40.50%	87.30%	17.10%	59.00%
2011-2012	30.60%	81.70%	19.50%	60.80%
2012-2013	34.30%	83.70%	27.20%	67.70%
2013-2014	41.50%	78.70%	17.20%	61.50%
Science				
	Grade 4		Grade 8	
	GAP		GAP	
2007-2008	0.0		-46.0	
2008-2009	-46.6		-39.1	
2009-2010	-48.6		-47.5	
2010-2011	-48.6		-47.5	
2011-2012	-51.1		-41.3	
2012-2013	-49.4		-40.5	
2013-2014	-37.2		-44.3	

Special Ed/General Ed Proficient/ Advanced Proficient SCIENCE				
Science				
	Grade 4		Grade 8	
	SE	Gen Ed	SE	Gen Ed
2007-2008			60.90%	91.50%
2008-2009	82.70%	96.60%	55.70%	91.90%
2009-2010	91.80%	97.90%	51.60%	93.70%
2010-2011	84.60%	97.60%	54.10%	93.30%
2011-2012	86.20%	98.20%	63.30%	94.10%
2012-2013	83.10%	97.90%	54.20%	93.60%
2013-2014	84.90%	98.60%	56.90%	94.20%
Science				
	Grade 4		Grade 8	
	GAP		GAP	
2007-2008	0.0		-30.6	
2008-2009	-13.9		-36.2	
2009-2010	-6.1		-42.1	
2010-2011	-6.1		-42.1	
2011-2012	-12.0		-30.8	
2012-2013	-14.8		-39.4	
2013-2014	-13.7		-37.3	

Special Ed/General Ed Advanced Proficient SCIENCE				
Science				
	Grade 4		Grade 8	
	SE	Gen Ed	SE	Gen Ed
2007-2008			10.10%	45.10%
2008-2009	30.80%	68.10%	17.70%	35.30%
2009-2010	36.70%	66.60%	14.10%	46.20%
2010-2011	44.90%	73.70%	4.90%	41.40%
2011-2012	28.70%	71.10%	15.00%	44.10%
2012-2013	29.90%	71.10%	12.50%	56.40%
2013-2014	34.20%	72.00%	7.70%	46.20%
Science				
	Grade 4		Grade 8	
	GAP		GAP	
2007-2008	0.0		-35.0	
2008-2009	-37.3		-17.6	
2009-2010	-29.9		-32.1	
2010-2011	-29.9		-32.1	
2011-2012	-42.4		-29.1	
2012-2013	-41.2		-43.9	
2013-2014	-37.8		-38.5	