

**new library
why now?**

A222/S2171 NJ Library Construction Bond Act

What is it?

Library buildings need to meet increasing demand for digital resources. In the August 2014 survey by NJLA, 60% of libraries plan to continue building for digital resources and technology, up from 51% in 2012.

• **A222/S2171** will allow public libraries to request additional funding for digital resources through the state bond program, subject to the approval of the Legislature.

How would the bonding be approved?

The Legislature would need to approve the purchase of the additional bonds, and the state bond program would need to be approved for the specific needs.

Where do we stand now?

With Library Construction Bonds of 2014, the state will add \$100 million to the state bond program. The \$100 million will be used to fund a variety of projects and programs, including library construction.



Why support it?

The New Jersey Library Construction Bond Act:

- Enhance library services for patrons
- Increase library access
- Allow digital resources, library materials, and ADA upgrades
- Create jobs for construction

The bond program will help libraries build or purchase new square feet of space, including 15 years supply of additional square feet of space for digital resources, and will help library projects meet compliance.

According to a recent survey of New Jersey public libraries...

- 50% were not ADA compliant
- 60% were in need of additional square footage
- 55% are considering or planning for expansion within the next two years
- 78% were in need of interior painting or re-carpeting
 - 74% need new furnishings
 - 49% need electrical upgrades
- 64% were interested in establishing additional points of service outside of the library building
- Technology was frequently cited as insufficient for user needs



Box 1194, Trenton, NJ, 08602 | Phone (609) 394-8032 | Fax (609) 394-8254 | www.njla.org
www.njlibrariesbuildcommunities.org

how we got here

**we have met with hundreds of members
of the community**

USERS

senior group

teens

authors

children & families

caregivers

TOWNSHIP & CIVIC GROUPS

department of public works
township engineer
township building official
historic preservation commission
park conservancy
business community
school district representatives
township committee

PARTNERS

building committee
board of trustees
library foundation
friends of maplewood library
library staff

April 3rd, 2017

public design charrette





lounge

archives

**MEDIA
STORAGE**

**OUTDOOR
SPACE**

**CONFERENCE
ROOM**

**computer
lab**

café

**BOOK
STORAGE**

**QUIET
SPACE**

**a place
to talk**

**small group
STUDY**

**SCREENING
ROOM**

**teen
area**

**mobile
lab**

**CLASS
ROOM**

gallery

**KIDS
area**

**circu-
lation**

PARKING

**work
space**

**COMMUNITY
ROOM**

LOBBY

**(write-in
candidate)**

WHAT'S IMPORTANT



WHAT'S IMPORTANT



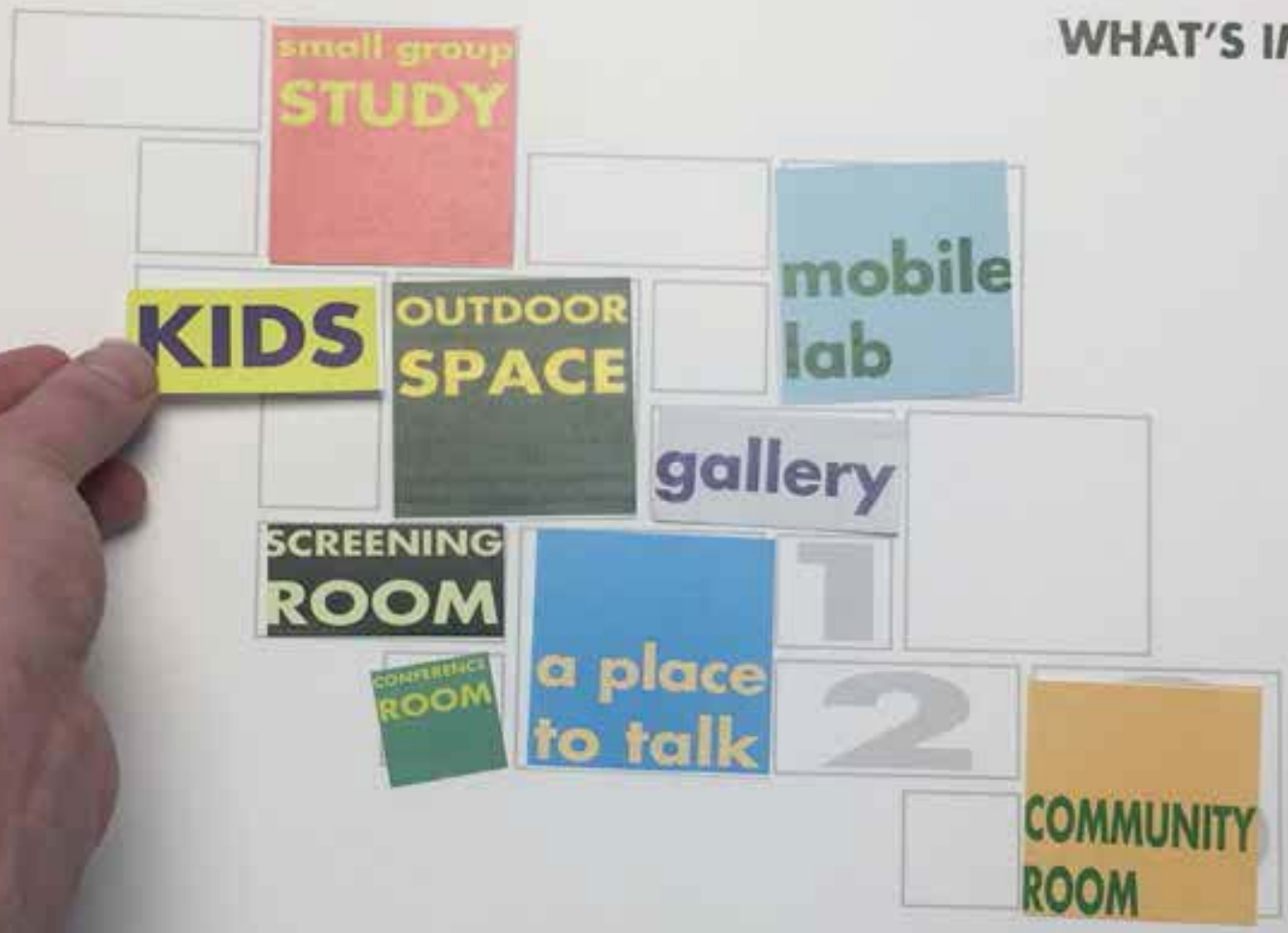
Maplewood
Memorial Library

YOUR LIBRARY - YOUR VOICE

sageandcoombearchitects

sageandcoombearchitects

WHAT'S IMPORTANT



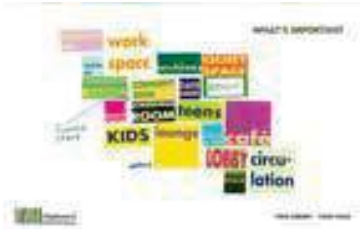
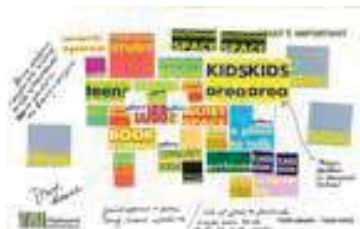
od
rary

YOUR LIBRARY - YOUR VOICE
sageandcoombearchitects

sageandcoombearchitects

WHAT'S IMPORTANT





books

more meeting rooms

stronger connection to the park

more electrical and data outlets

outdoor reading space

local art throughout

sustainable

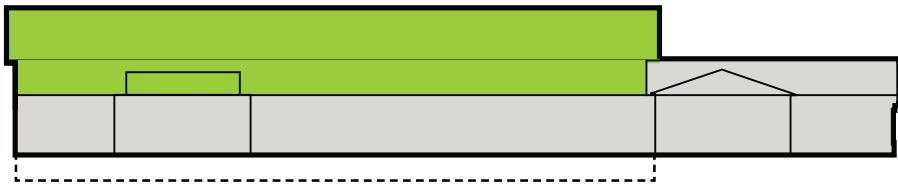
parking / book drop-off

natural light / better lighting

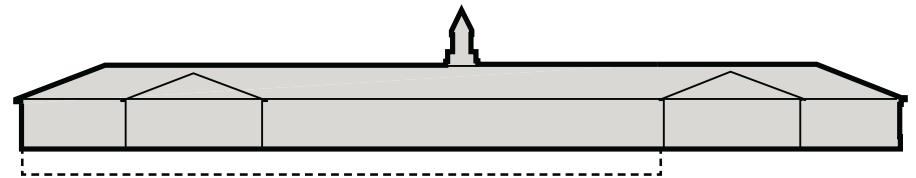
cafe or space for coffee and snacks

flexible gallery space

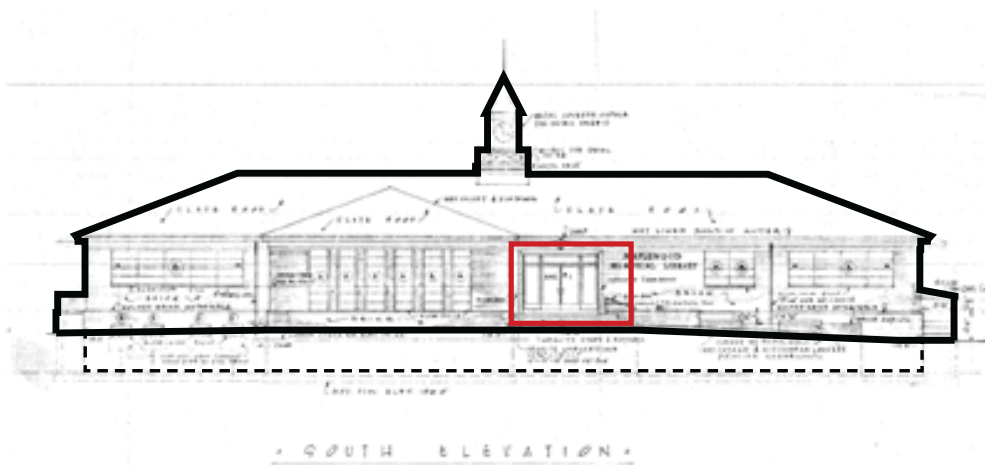
modernized service points



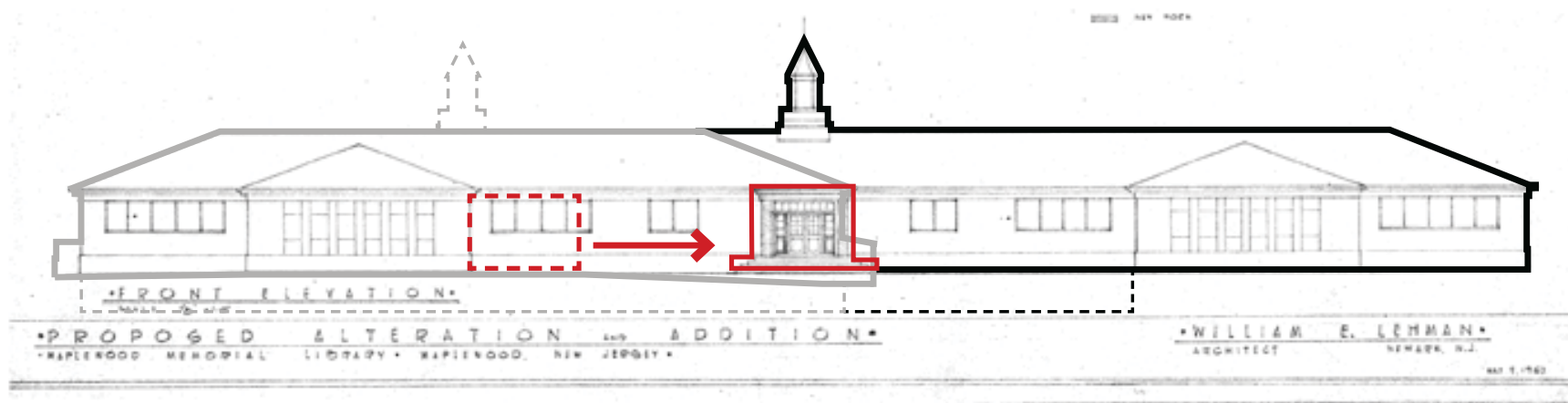
proposed
33,177 SF



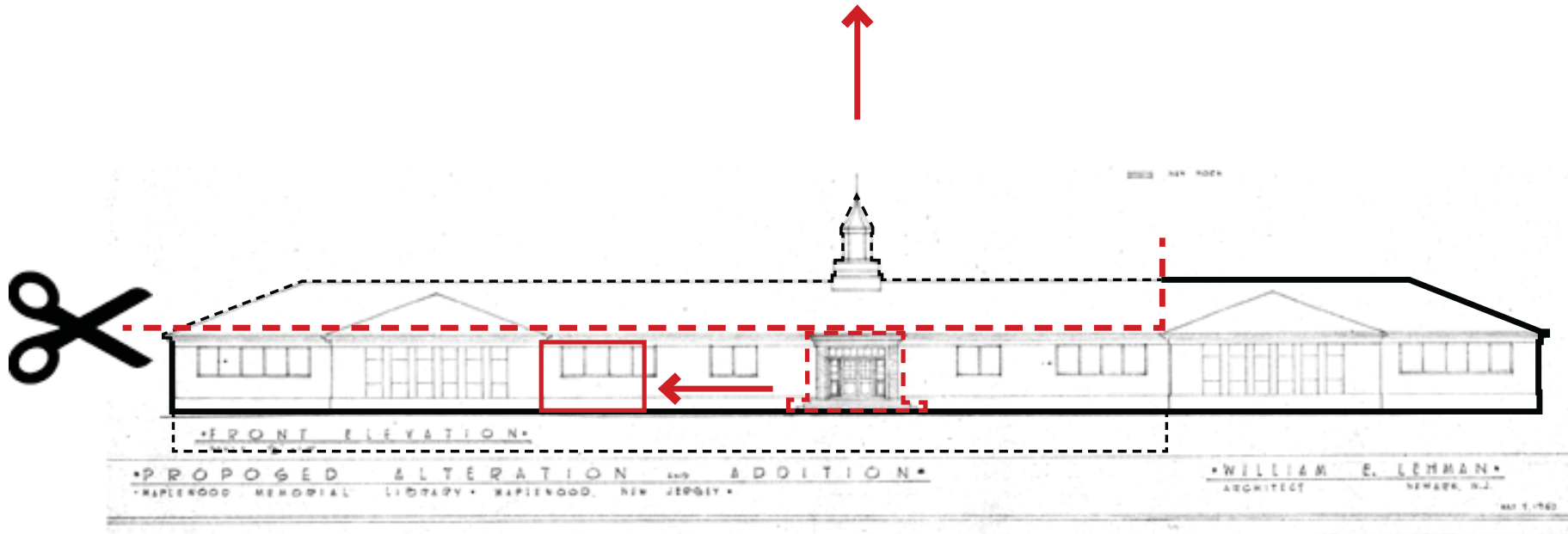
existing
24,973 SF



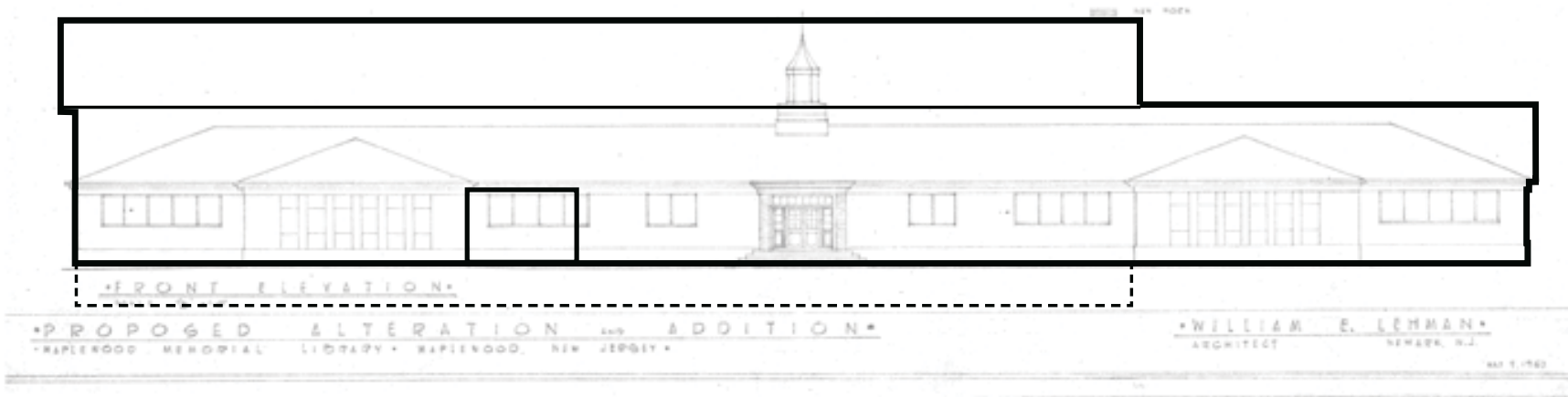
1956



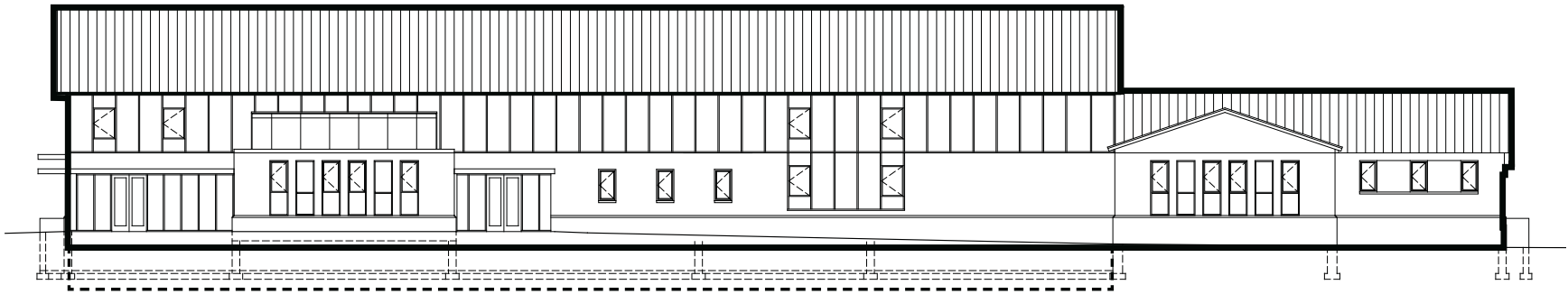
1969



2017



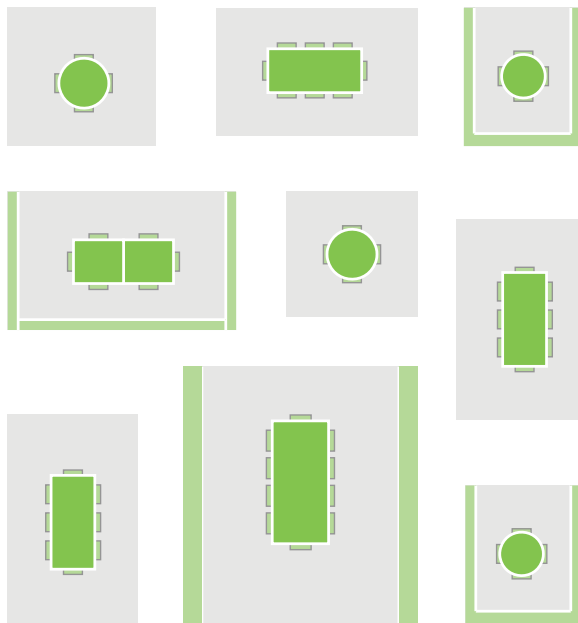
2017



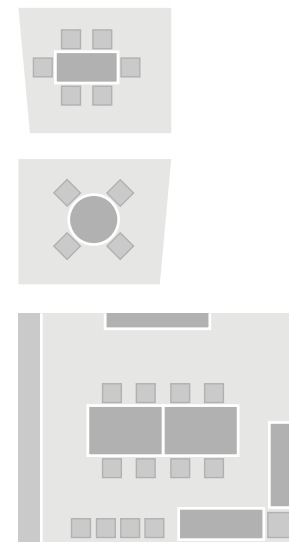
SOUTH ELEVATION

2017

MEETING ROOMS

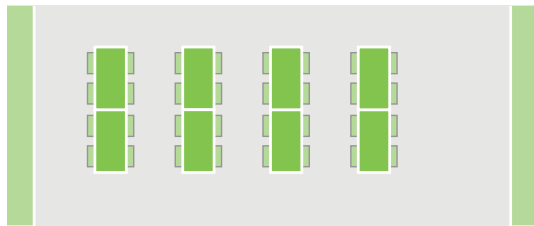


proposed



existing

CHILDREN'S PROGRAM ROOM

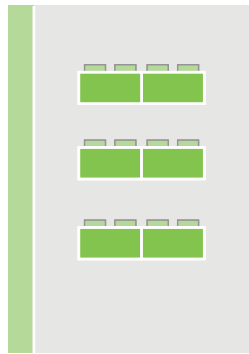


proposed

0

existing

MAKER SPACE

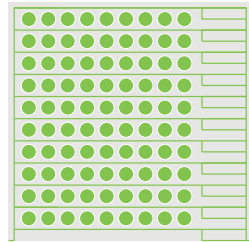


proposed

0

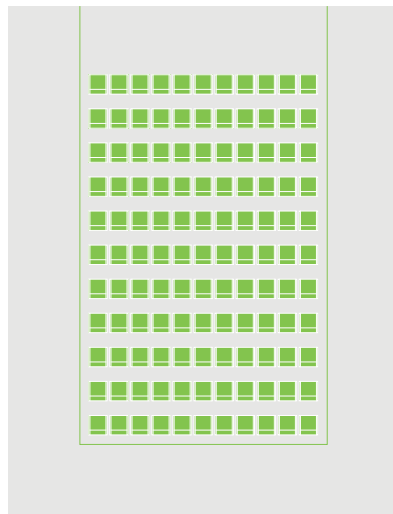
existing

ASSEMBLY SPACE(S)



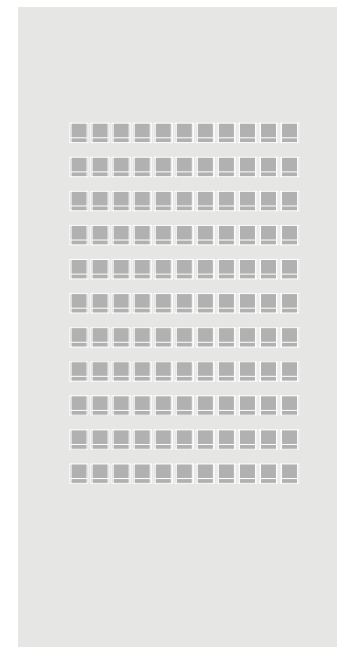
capacity: 100

+



capacity: 230

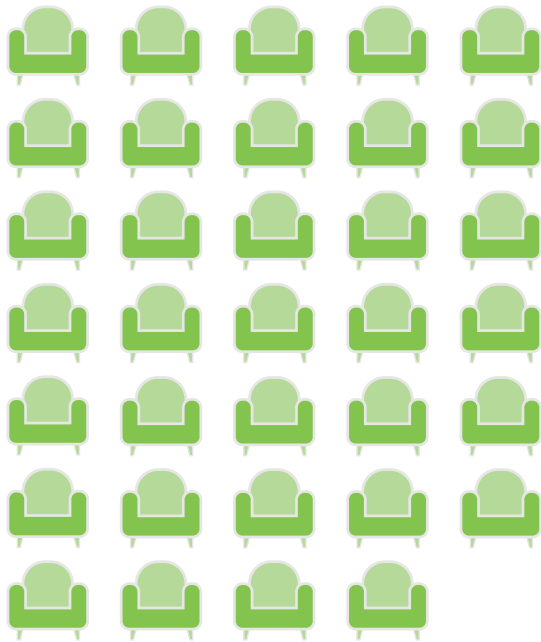
proposed



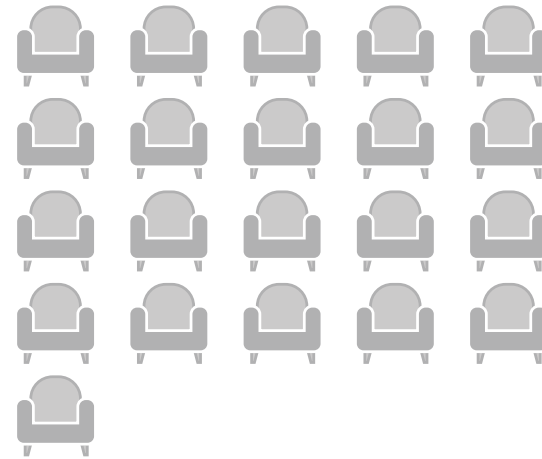
capacity: 224

existing

LOUNGE SEATS

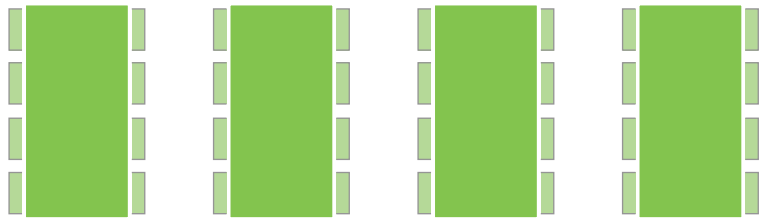


proposed

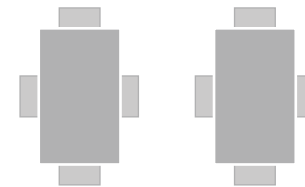


existing

GROUP WORK TABLES

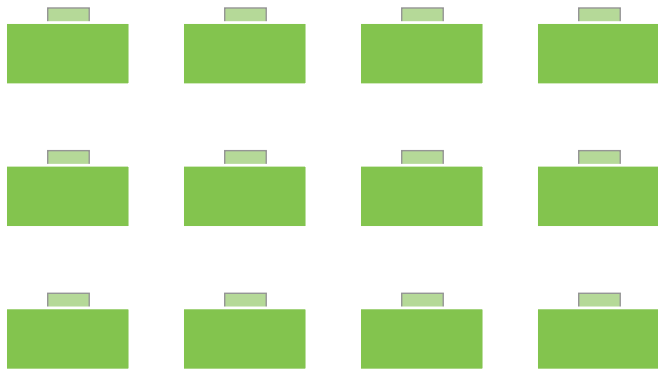


proposed

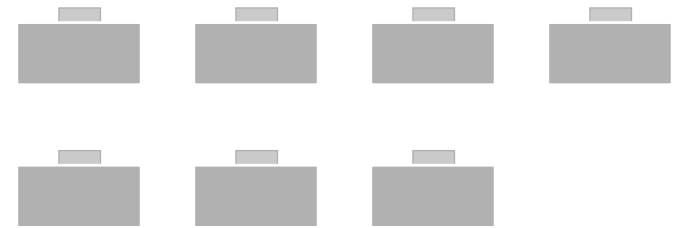


existing

STUDY CARRELS

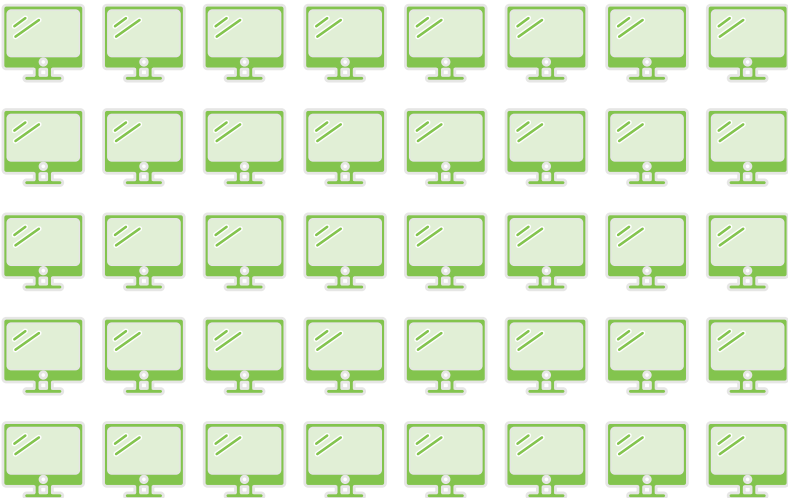


proposed

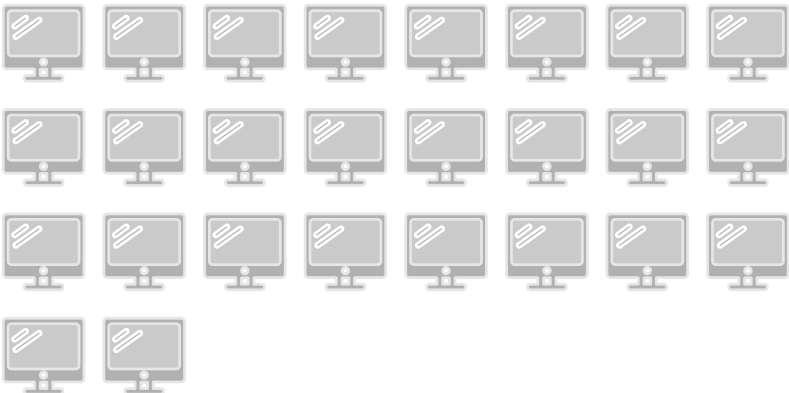


existing

COMPUTER STATIONS



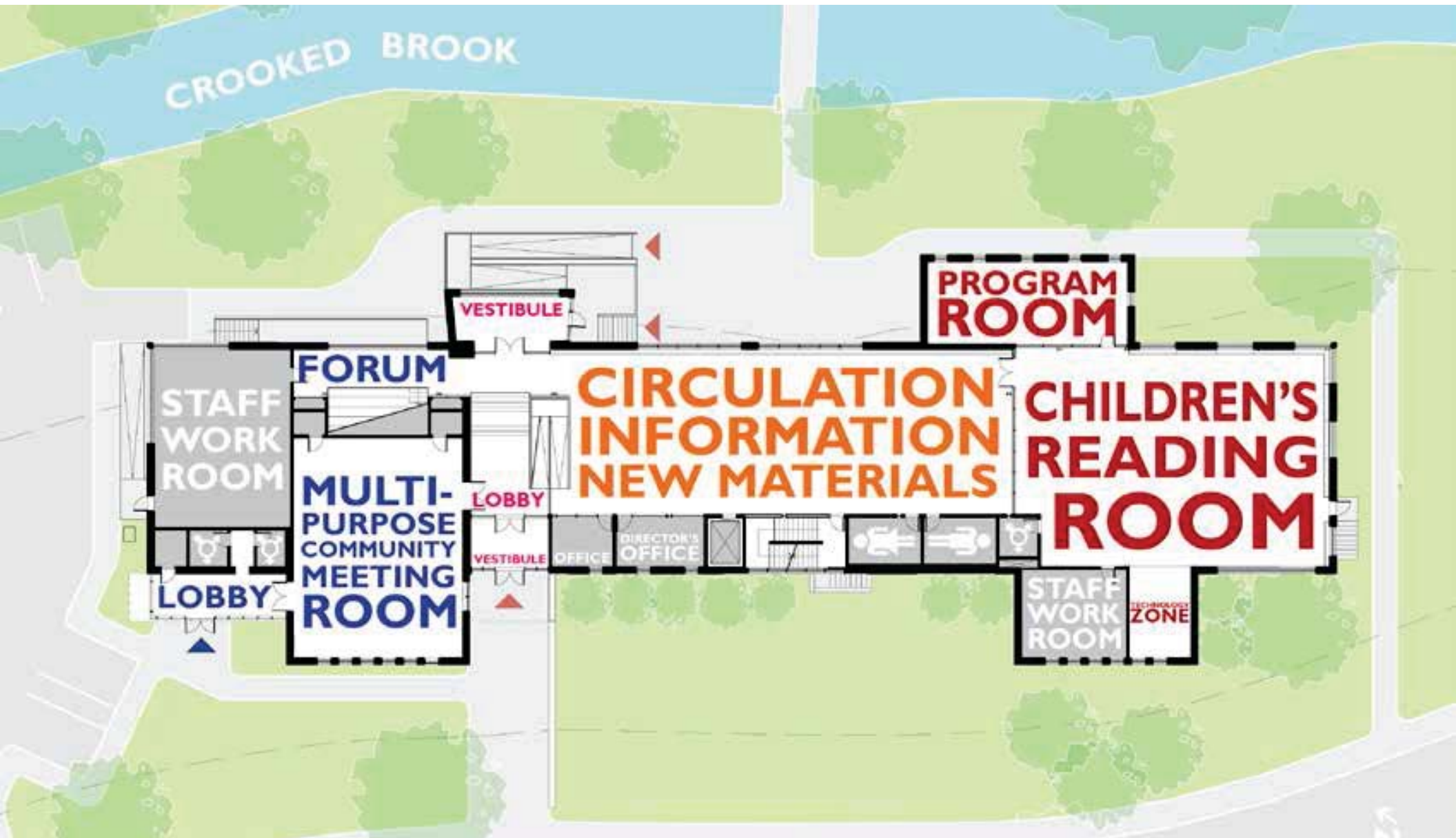
proposed



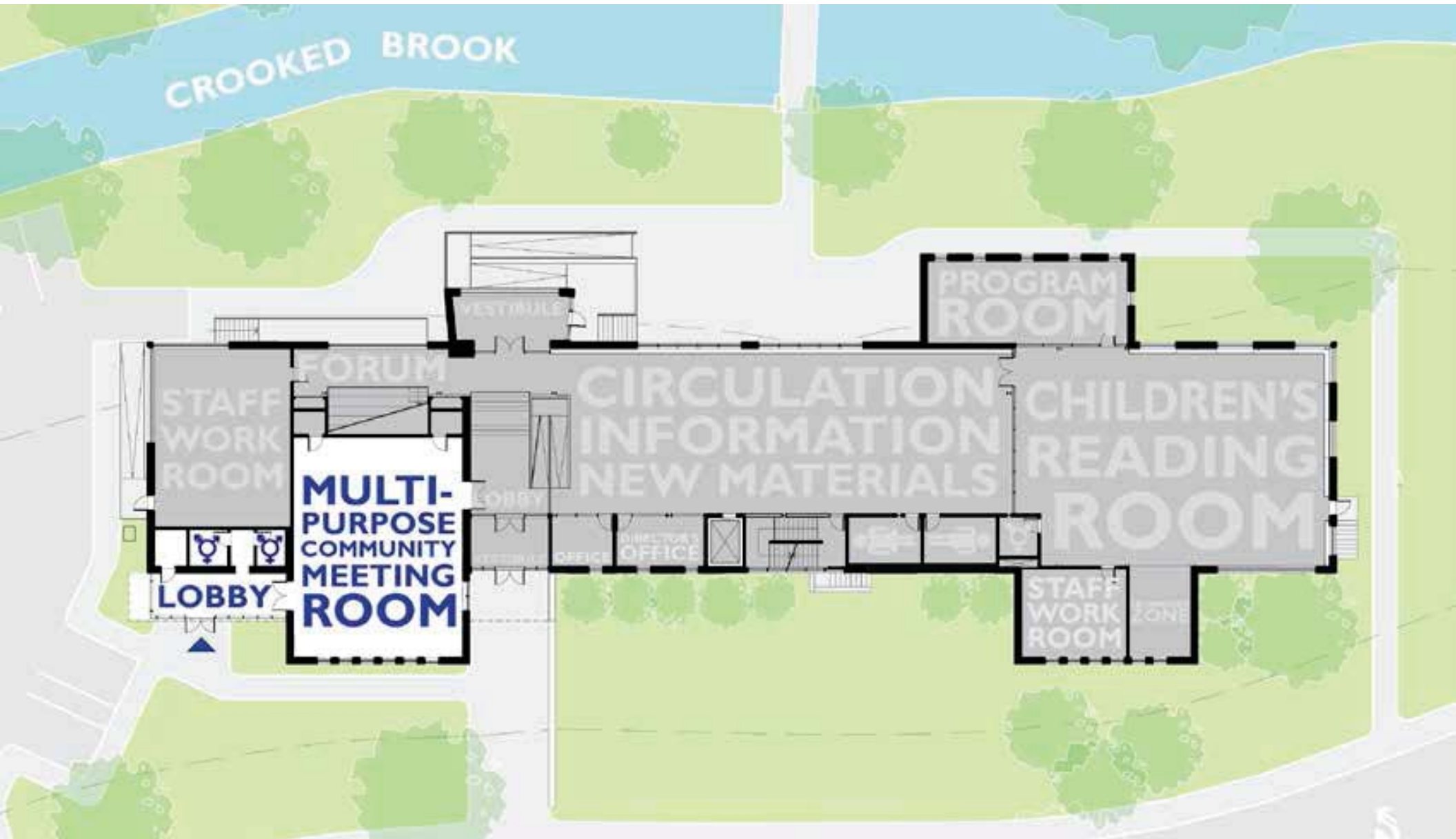
existing



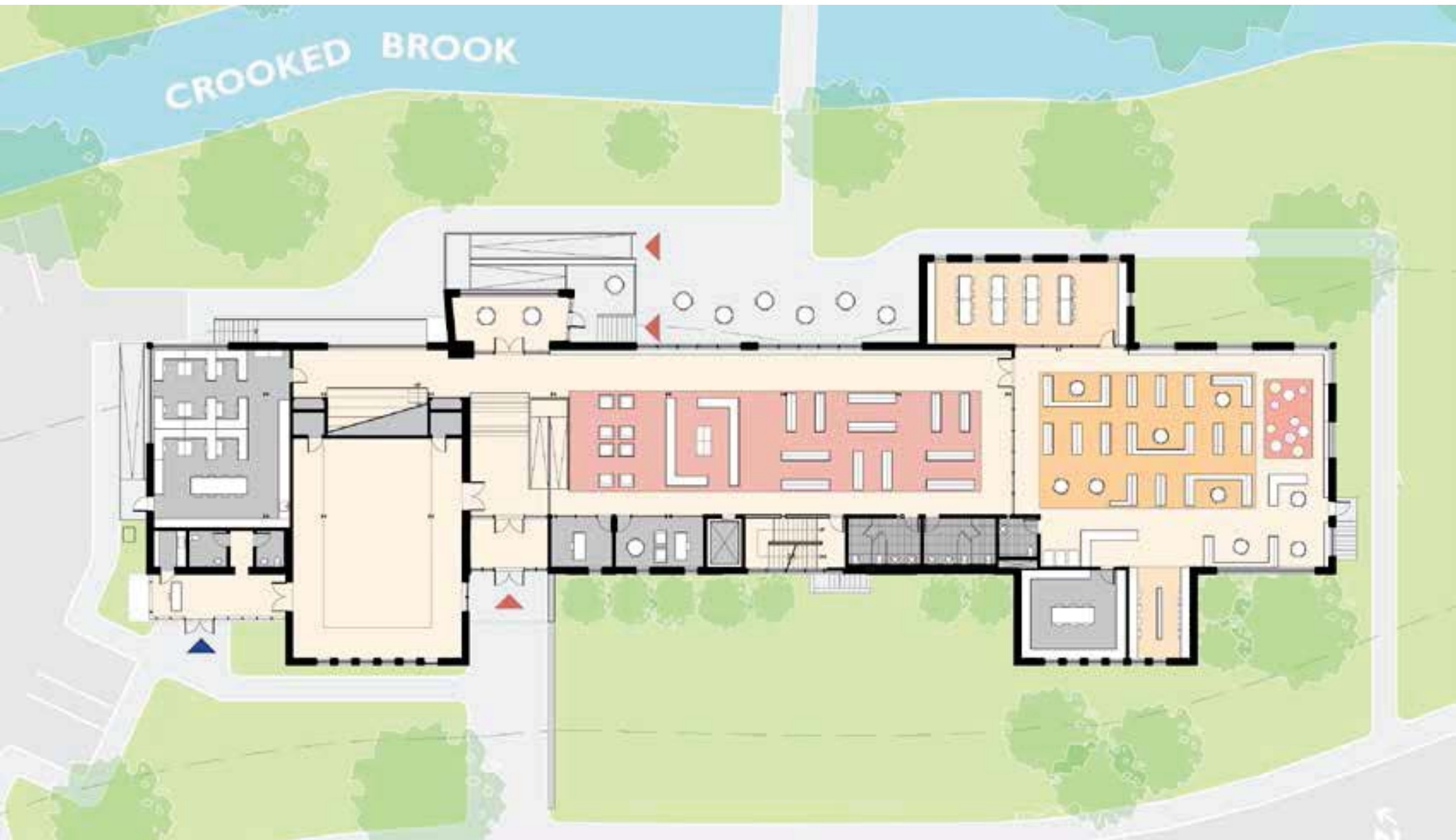
SITE PLAN



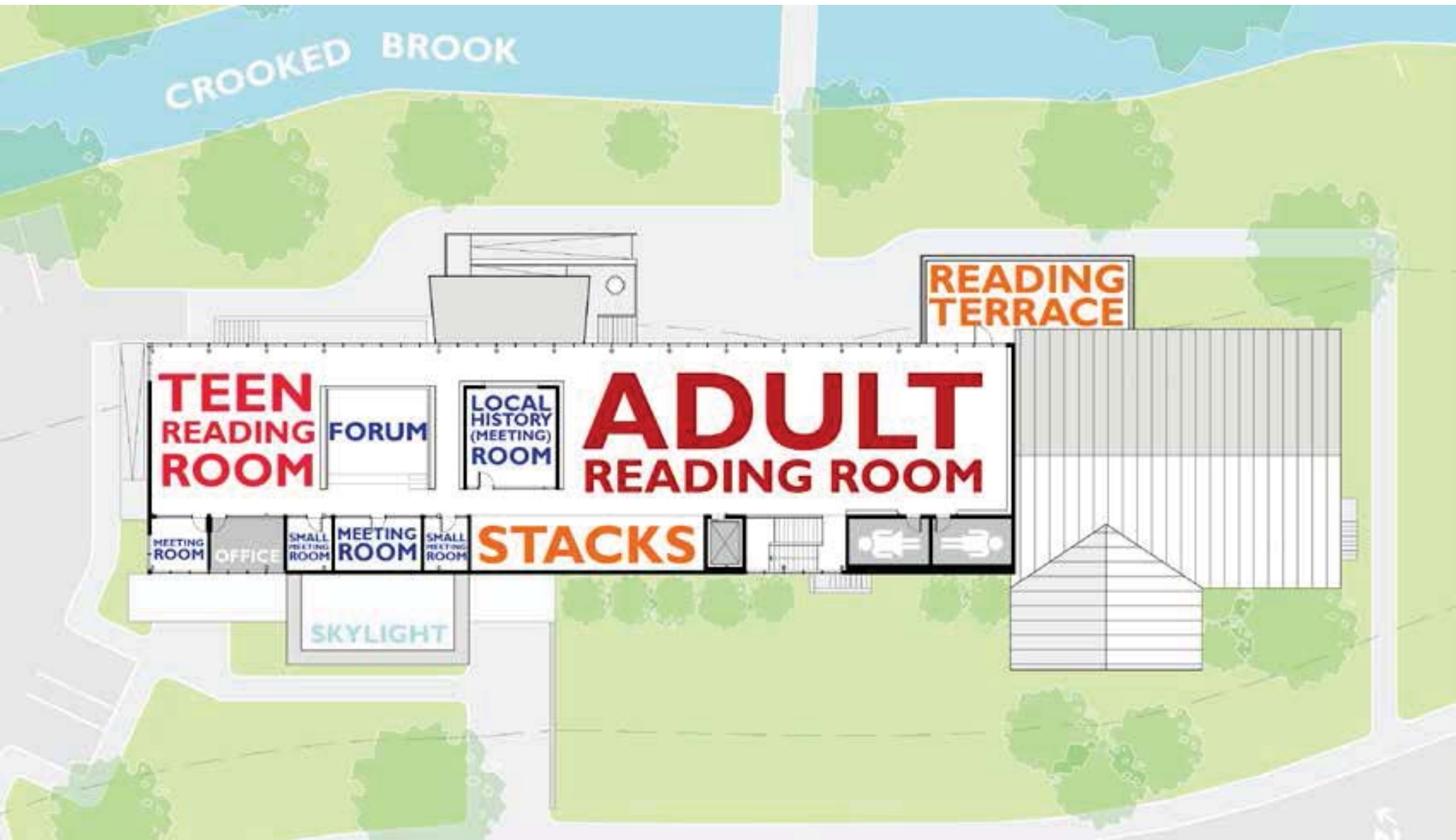
GROUND FLOOR



AFTER HOURS



GROUND FLOOR



SECOND FLOOR



SECOND FLOOR



LOWER LEVEL



LOWER LEVEL



BUILDING ELEVATIONS



BUILDING ELEVATIONS

ENERGY:

HIGH SUMMER SUN

shading blocks direct sunlight, reducing cooling load

LOW WINTER SUN

thermal mass reduces heat island

SITE:

SRI

high SRI reduces heat island effect

WATER:

FIXTURES

high efficiency fixtures reduce water demand

LANDSCAPE

water efficient landscape

LIGHTING

high-efficiency LED lighting on daylight sensors

BUILDING ENVELOPE

high-performance building envelope reduces loads

MATERIALS:

SUN CONTROL

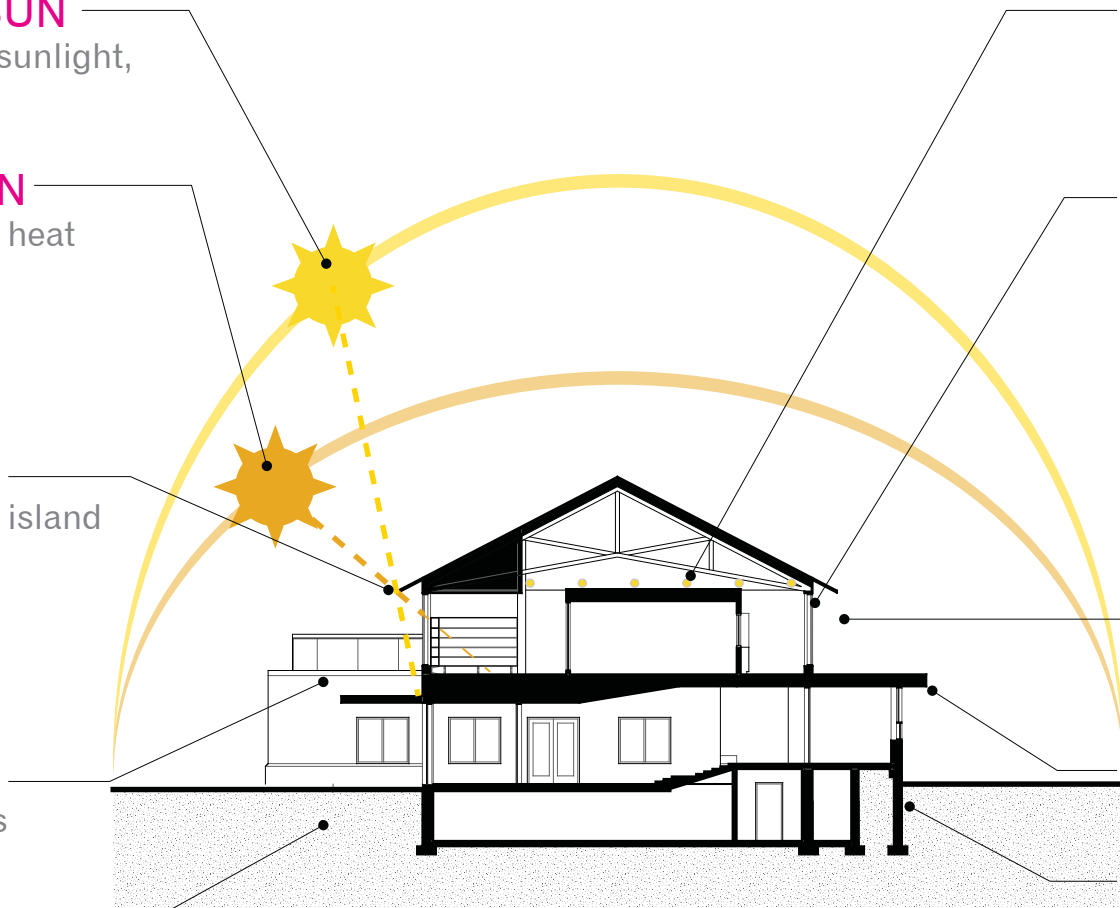
reduces glare, maximizing daylight & views

LOW VOC MATERIALS

enhances healthy environment

REUSE

reuse existing envelope, reducing carbon footprint



THE MISSION: LEED



VIEW FROM BAKER STREET - DAY



VIEW FROM BAKER STREET - NIGHT



RENDERED WITH EXISTING TREES
VIEW FROM MEMORIAL PARK



**RENDERED WITH EXISTING TREES SHOWN AS TRANSPARENT
VIEW FROM MEMORIAL PARK**



CIRCULATION DESK



THE FORUM



COMMUNITY MEETING ROOM



COMMUNITY MEETING ROOM



CHILDREN'S READING ROOM



TEEN READING ROOM



ADULT READING ROOM

**new library
how?**



CONSTRUCTION COST:

\$18,385,311

33,177 SF


\$554/SF

DIRECT COST	\$5,394,103
MEP	\$3,593,832
LANDSCAPE	\$963,357
TOTAL DIRECT COST	\$9,953,292
MARK-UPS	\$5,932,019
FF&E	\$2,500,000
TOTAL CONSTRUCTION COSTS	\$18,385,311
SOFT COSTS	\$1,503,379
BOND INTEREST PAYMENTS	\$2,153,846
TOTAL COST	\$22,449,472

DESIGN CONTINGENCY 17%	\$1,692,060
LEED	\$232,907
GENERAL CONDITIONS 10%	\$1,187,826
OVERHEAD AND PROFIT 7.5%	\$979,956
INSURANCE AND BOND 2.5%	\$351,151
ESCALATION TO 6/2019 7%	\$1,025,440
CONSTRUCTION CONTINGENCY 3%	\$462,679
MARK-UPS TOTAL	\$5,932,019

FUNDING PARTNERSHIP



A vibrant, sunlit park scene with numerous large, leafy trees. People are seen walking along paths, some pushing strollers, and a dog is visible in the middle ground. The overall atmosphere is peaceful and community-oriented.

**“if you have a garden
and a library, you have
everything you need”**

- cicero